

INSIDE

- 2 CTRE director's message: A major national project
- 2 Ali Kamyab leaves for California
- 3 New Construction Management and Technology Group
- 3 Hello, Tom Cackler
- 4 CTRE supporting 60 students
- 4 Francois scholarship

MTC Asset Inside

CTRE *en route* highlights transportation research, education, and outreach at the Center for Transportation Research and Education at Iowa State University.

It is published online at www.ctre.iastate.edu/



Center for Transportation Research and Education

Helping other states locate crashes

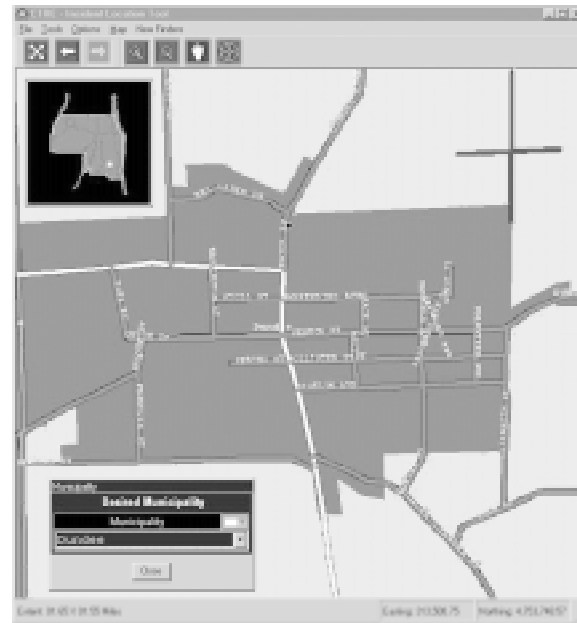
The incident location tool is catching on. The New York State Police and the Georgia Department of Transportation are working with CTRE to adapt the tool for their use. That's in addition to the 200 or so Iowa agencies currently using it, including the Iowa State Patrol and the Iowa Department of Transportation's (Iowa DOT) Office of Motor Vehicle Enforcement.

Designed by CTRE staff members Dan Gieseman and Reg Souleyrette, the tool was originally developed for the Iowa DOT to work in conjunction with its Traffic and Criminal Software (TraCS). Gieseman is reprogramming and generalizing the tool so that it can more easily work with other states' data requirements.

The location tool can stand alone as long as it has a database for storing and validating data. Gieseman says development of the tool will continue "until it's an almost out-of-the-box software."

The incident location tool uses geographic information systems (GIS) software to provide users with a map-based computer screen. Users can locate car crashes and other incidents precisely on a digital map. The information is stored locally for later download.

In Iowa, all data are eventually sent to the Iowa DOT's centralized database for analysis and storage. Analyzing precise location information of crashes in conjunction with information about the condition of a road, for example, is



The location tool uses a map-based interface.

helping the Iowa DOT determine why certain crashes occur. The Iowa DOT has complete sets of data collected with the location tool beginning in 2000.

For more information about the incident location tool, see www.ctre.iastate.edu/research/locationtool/ or contact Dan Gieseman, 515-296-0796, dgiesema@iastate.edu.

Green Scholars named

Two Iowa State University students in civil engineering, Gary Conway and Molly McCarthy O'Brien, will be sharing the new Howard R. Green Company graduate assistantship beginning this fall. Both students will work on research projects at CTRE.

Conway will be working on a safety-related project with Shauna Hallmark, assistant professor of civil and construction engineering. O'Brien will be working

as a teaching assistant for Reg Souleyrette, associate professor of civil and construction engineering, in his highway design course during the fall semester. In the spring she will work on the remote sensing project, which she's been working on this summer as well.

The annually renewable assistantship was created by Howard R. Green Company to encourage students to pursue graduate study in transportation.

Iowa DOT and CTRE library services team up

A new partnership between CTRE's Local Technical Assistance Program library (the Stan Ring Memorial Library) and the Iowa Department of Transportation's (Iowa DOT) library makes it easier for Iowa's busy transportation professionals to

- conduct research quickly and efficiently, and
- access a worldwide network of transportation resources.

The Iowa DOT library's extensive body of transportation research, data and graphics, and history includes

- stay abreast of new technology,
- track new developments in any specialty area,

- books,
- technical reports,
- periodicals,