


CONCRETE TESTING ADHERENCE COLLABORATION CTAC®

A summary of the CTAC program
& the benefits to the concrete industry

Presented by JT Mesite, P.E.
Program Manager
Colorado Ready Mixed Concrete Association



CRMCA
COLORADO READY MIXED
CONCRETE ASSOCIATION

NRMCA
NATIONAL READY MIXED
CONCRETE ASSOCIATION

About Me



- 

Graduated
Univ. of Wyoming
in 2001
*Civil Engineering
(Geotech discipline)*
- 

Received
Professional
Engineer (P.E.)
in 2006
- 


Career includes
construction materials
testing, pavement and
foundation design, and
inspection/forensics for
15 years
- 

Employed with
CTL|Thompson,
Geocal,
and Cesare
- 

Enslaved
PROUDLY working with
the CRMCA
since Fall 2016



Strength
in Numbers



Project Expectations



Technicians *must* be certified



Technicians *must* know procedures



Technicians *should* know WHY testing is needed and meaning of tests



Managers *should* know who tests correctly and consistently



Managers *should* know if training is working



Producers *should* know their results are not due to "poor" testing



Owners *must* feel at ease with testing and results

Strength
in Numbers



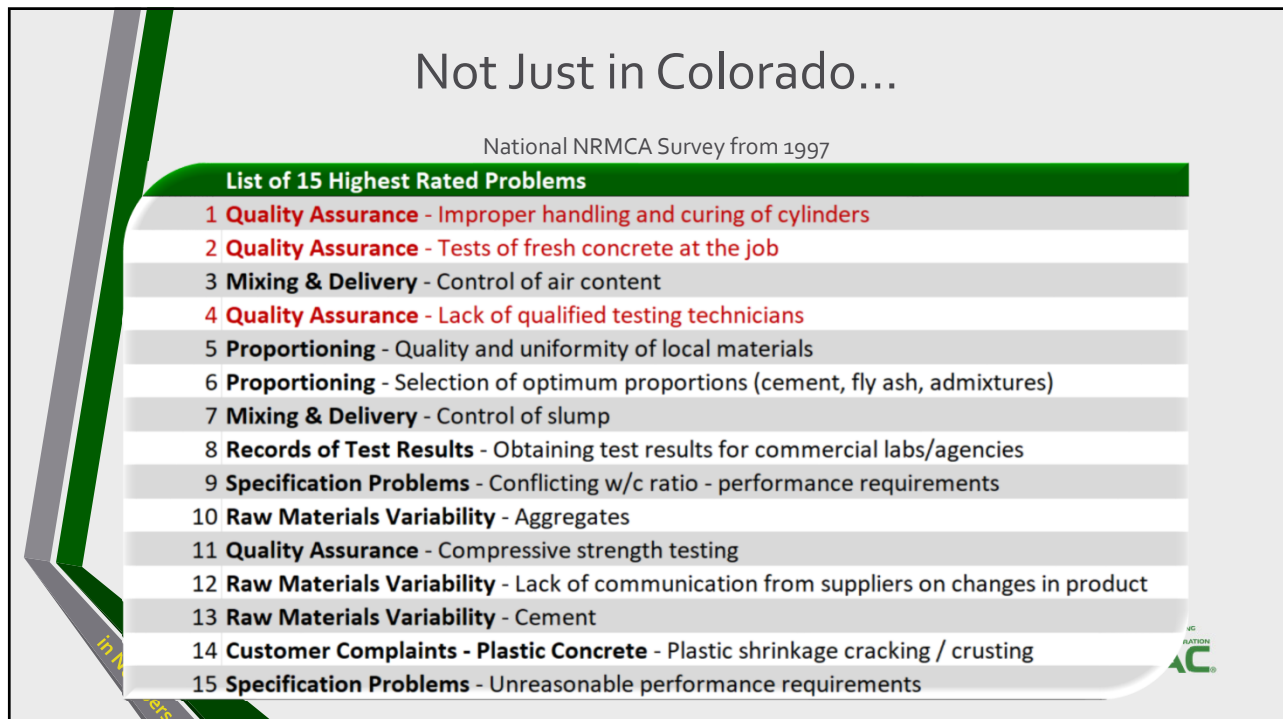
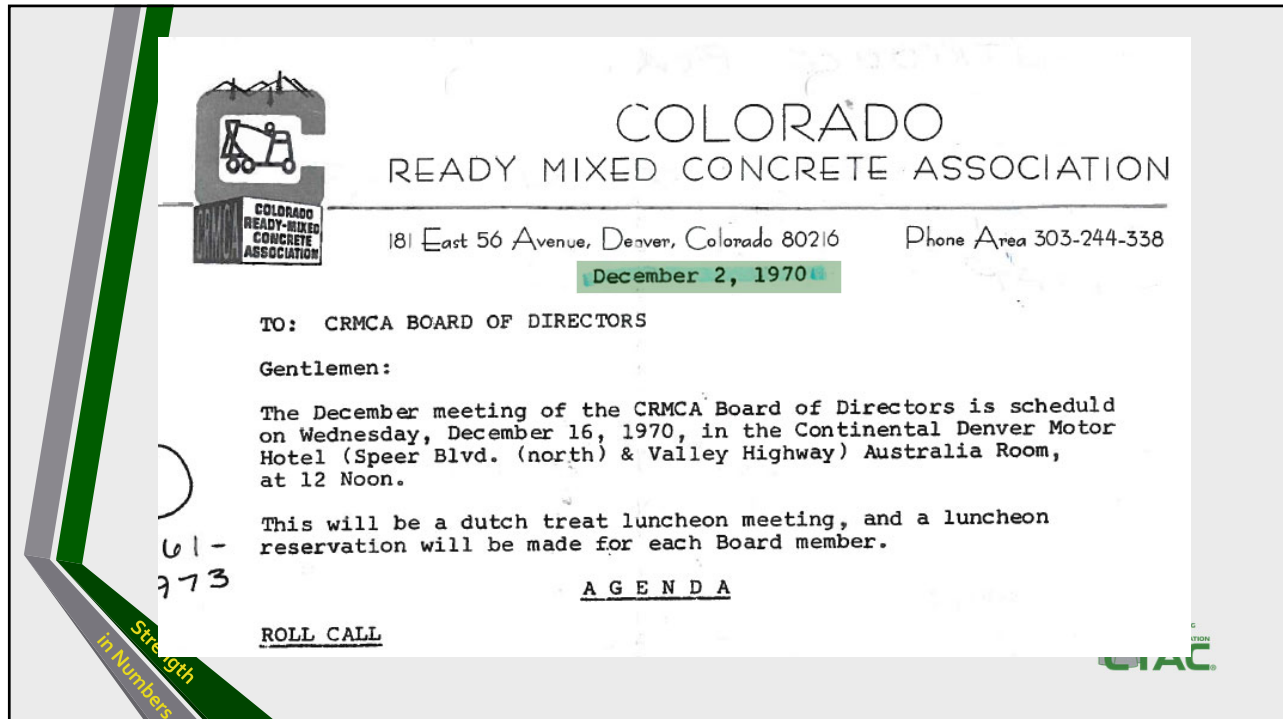
MINUTES OF NOVEMBER 13 & 14 MEETINGS AS PER ENCLOSED COPY

HIGHWAY DEPARTMENT SPECIFICATIONS PROBLEMS

Plans are in the making - and probably will be activated before the December Board meeting - to determine our industry's position, also that of the Colo. Sand & Gravel Producers Association, on recent difficulties with the Colo. Department of Highways in their exacting penalties on producers for in-place concrete purported to be outside of tolerances - with possible inconsistencies in sampling and testing procedures. Representatives of both Associations will meet prior to the Board meeting, and possibly will come up with a recommended plan of action for the Board's decision.

Strength
in Numbers

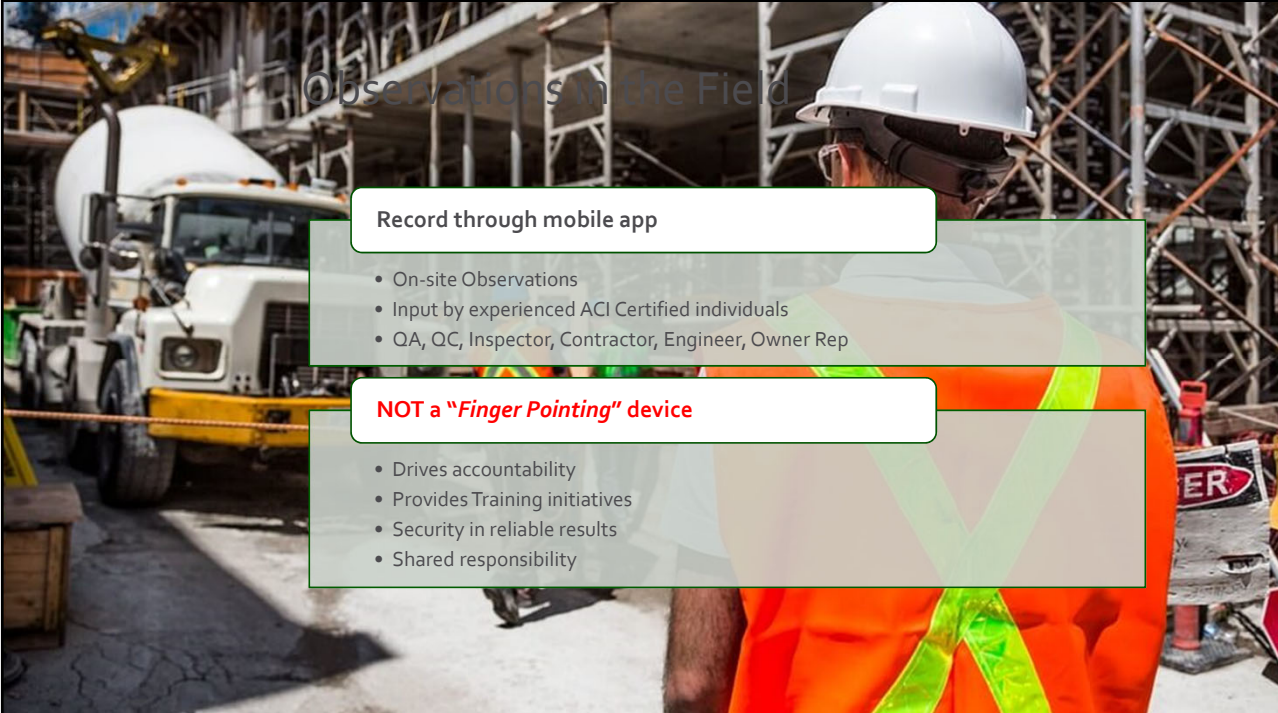






Adherence to Standards Overview

- Goal of the CTAC Program
 - Fair and Consistent Assessment of Ready Mixed Concrete**
- ASTM and ACI established standards and guidelines to evaluate the performance of concrete
 - Not consistently followed or monitored



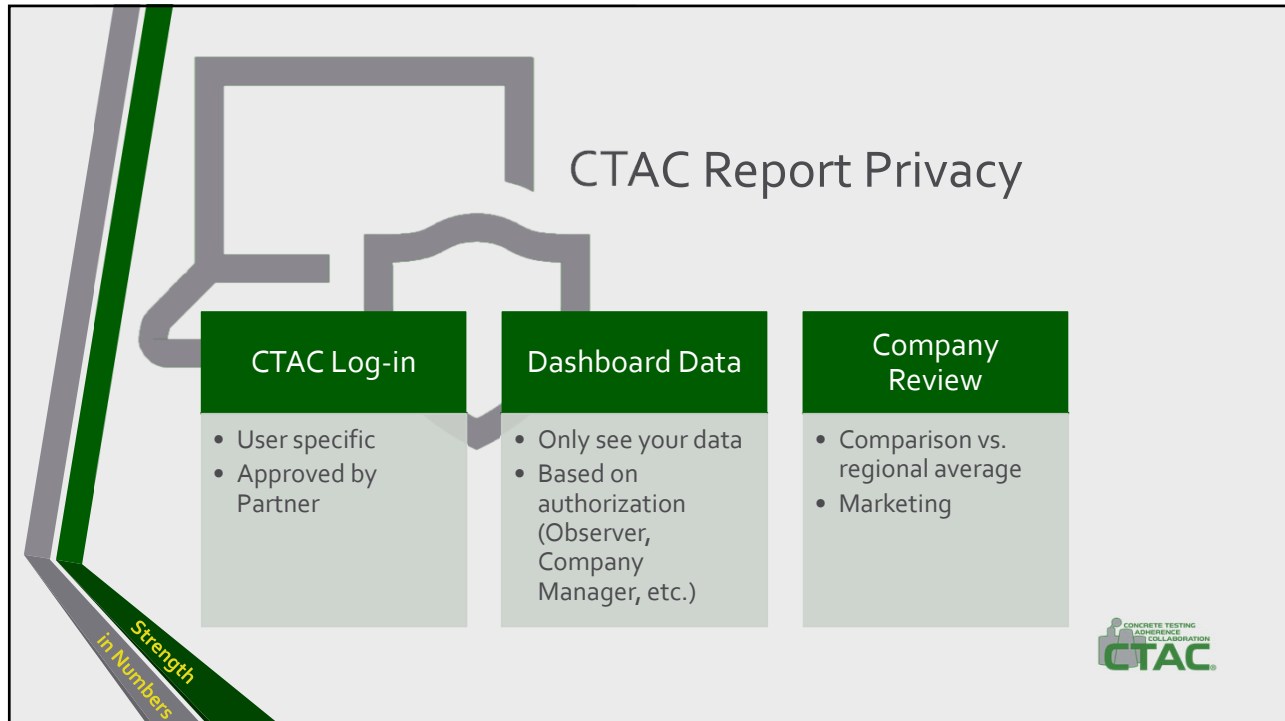
Observations in the Field

Record through mobile app

- On-site Observations
- Input by experienced ACI Certified individuals
- QA, QC, Inspector, Contractor, Engineer, Owner Rep

NOT a "Finger Pointing" device

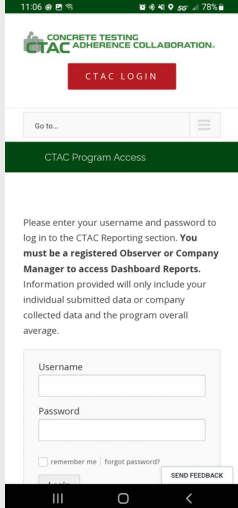
- Drives accountability
- Provides Training initiatives
- Security in reliable results
- Shared responsibility



Current Main Questions

- ACI CERTIFIED...?**
Is the testing technician currently ACI Field 1 certified to test concrete?
- SAMPLED CORRECTLY...?**
Excluding preliminary check tests, was the concrete sampled in accordance with ASTM C172?
- TESTS DONE CORRECTLY...?**
Were physical property tests completed and strength specimens molded (if required for cast) in accordance with the appropriate ASTM procedures?
- SPECIMENS PROPERLY CURING...?**
Were the concrete specimens (if required to cast) stored in an initial curing environment following ASTM C31, section 10.1.2?


Strength in Numbers

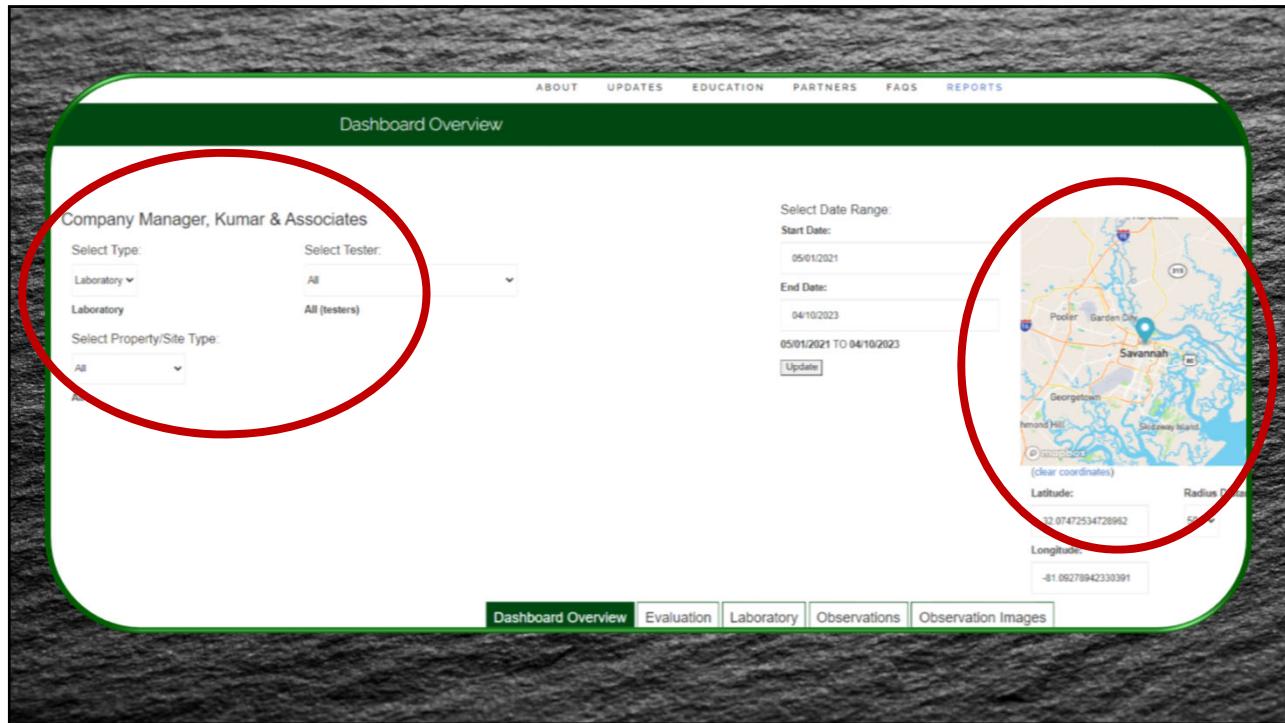
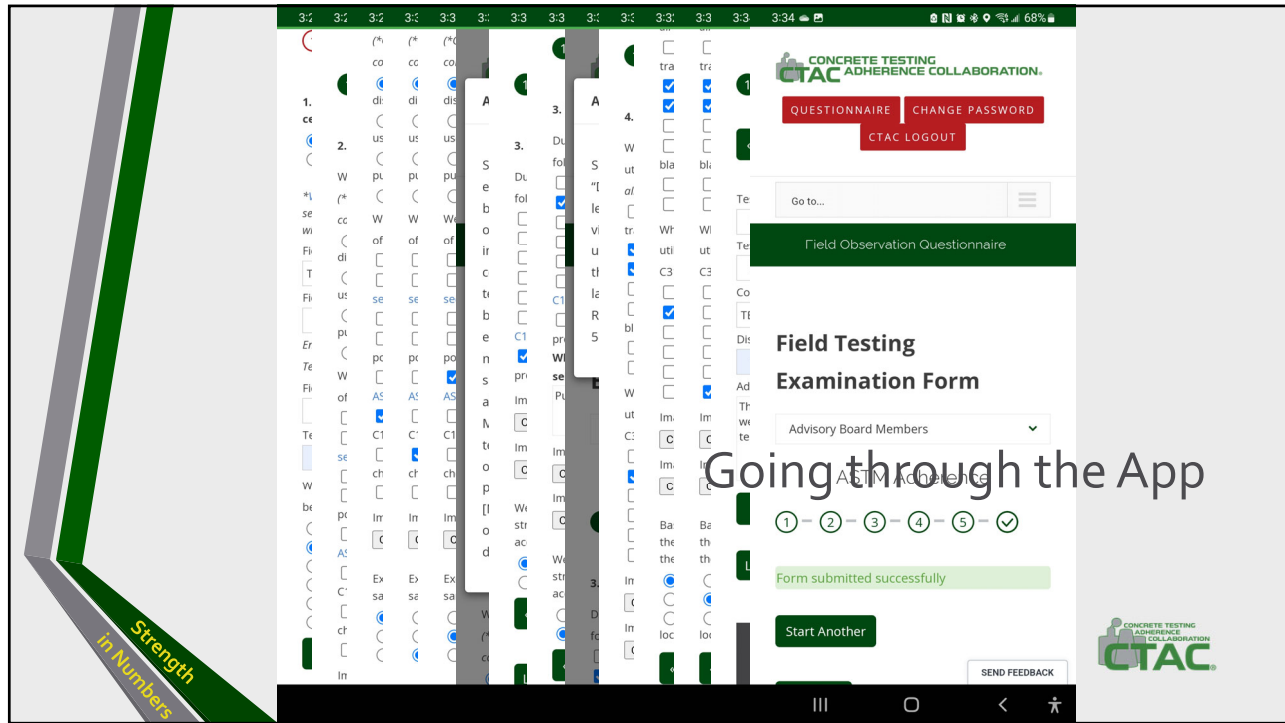


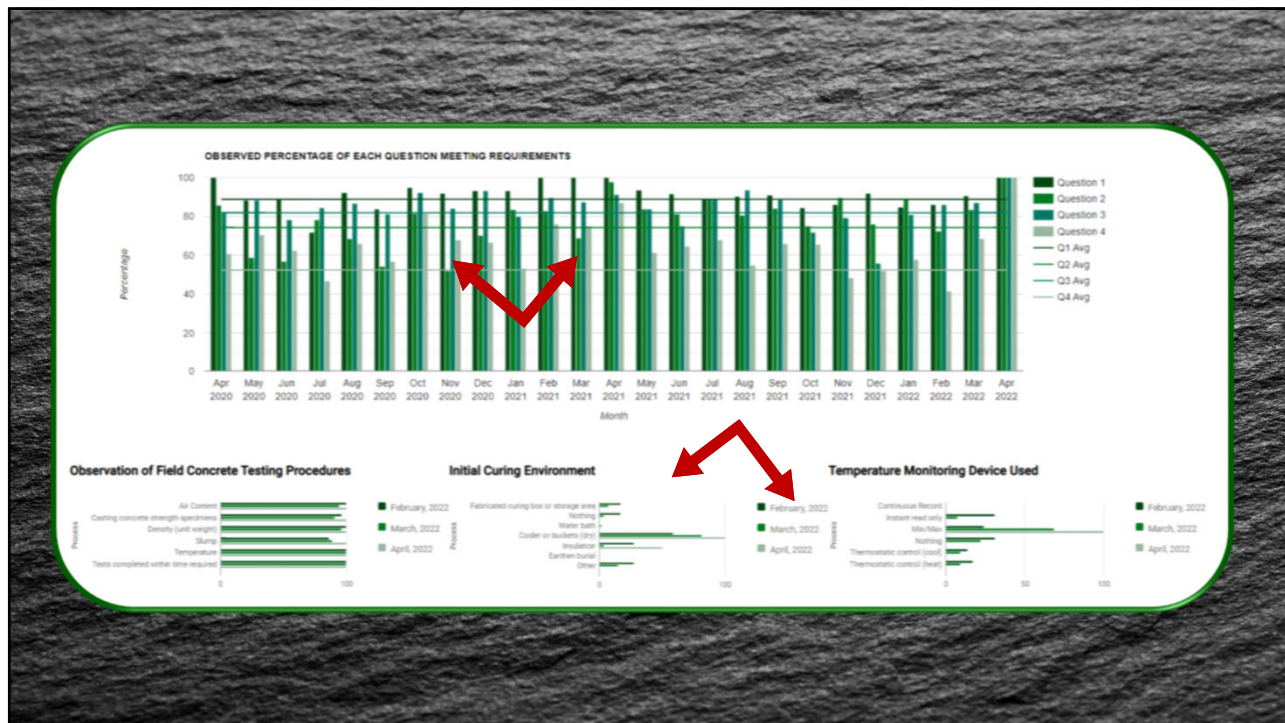
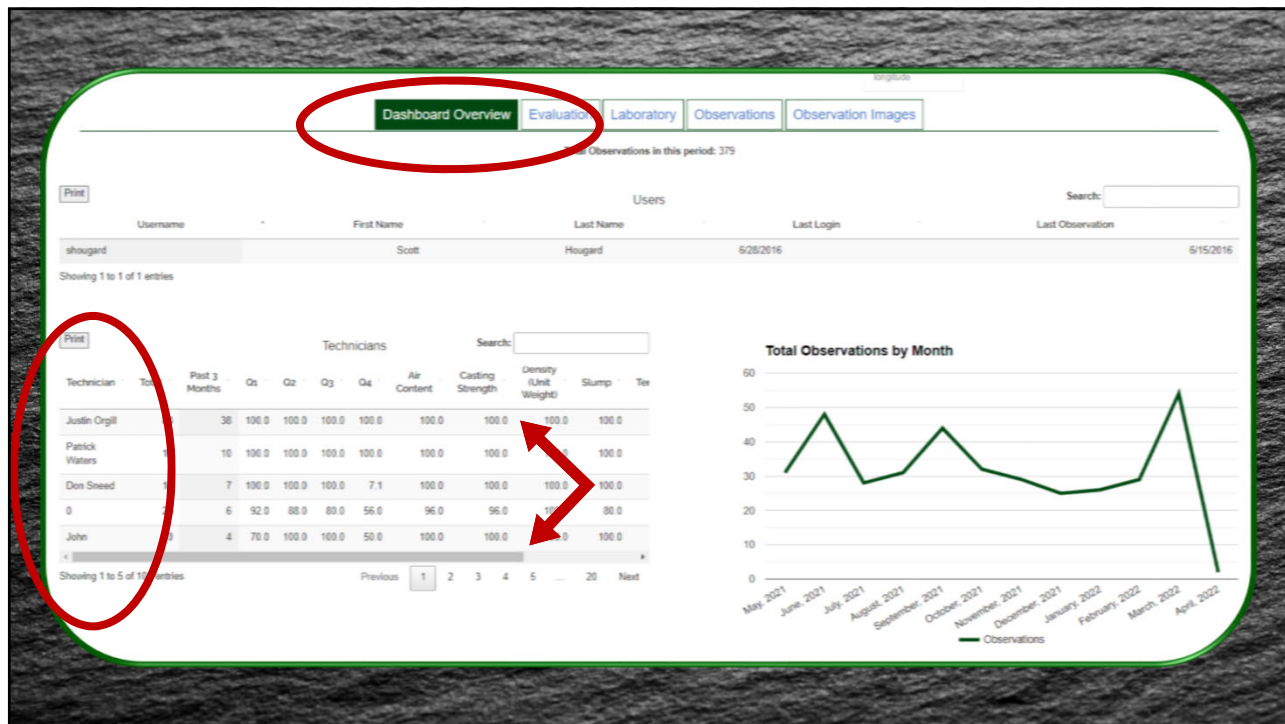
11:06 78%
CONCRETE TESTING ADHERENCE COLLABORATION
CTAC LOGIN
Go to...
CTAC Program Access

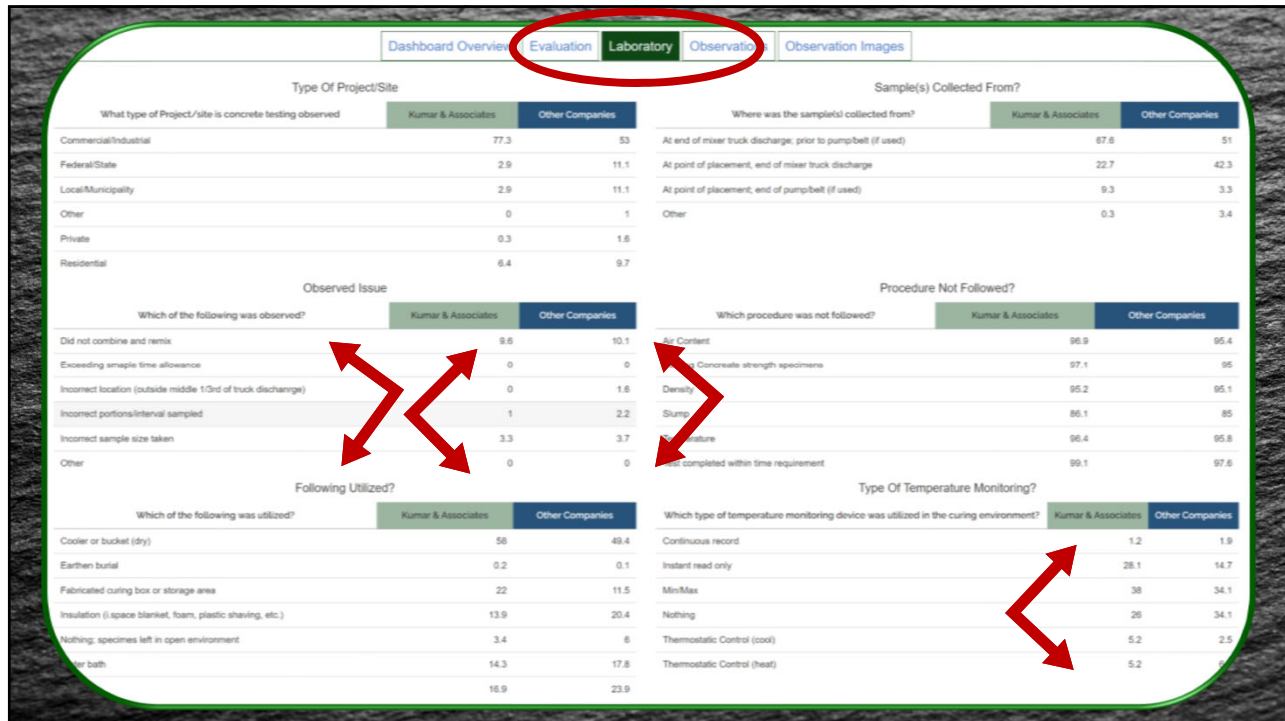
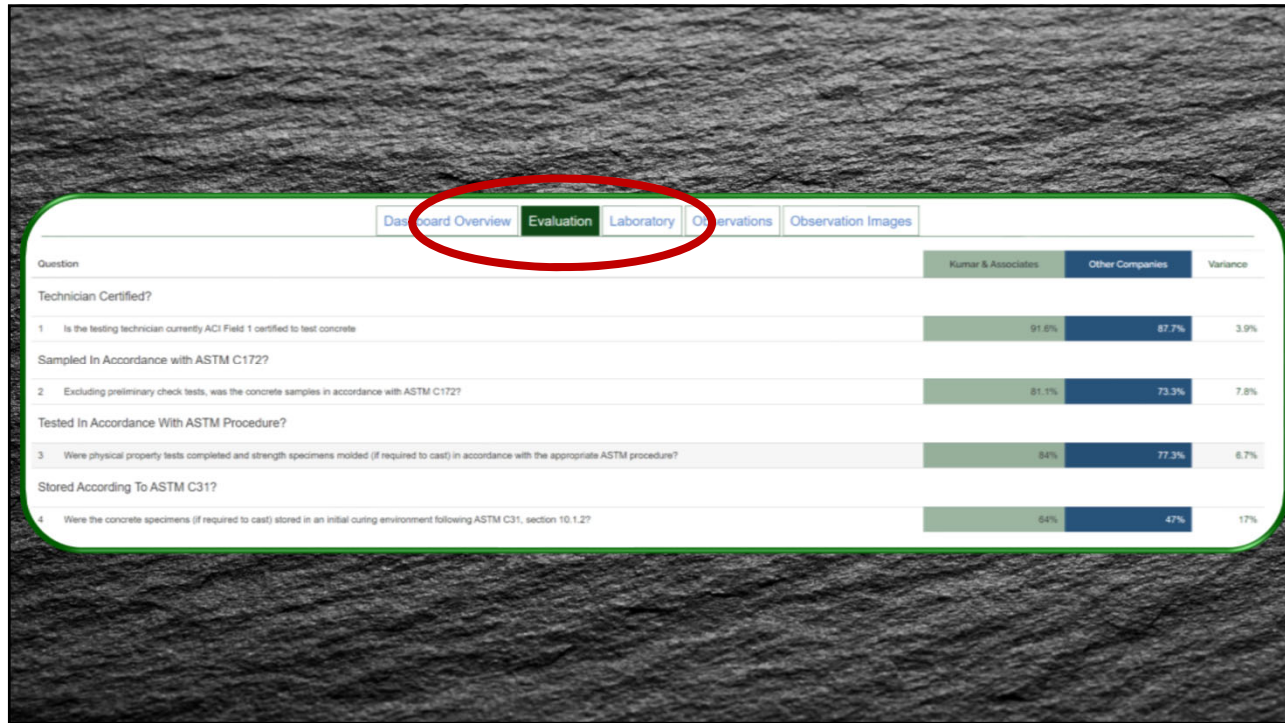
Please enter your username and password to log in to the CTAC Reporting section. **You must be a registered Observer or Company Manager to access Dashboard Reports.** Information provided will only include your individual submitted data or company collected data and the program overall average.

Username
Password
 remember me | forgot password? **SEND FEEDBACK**







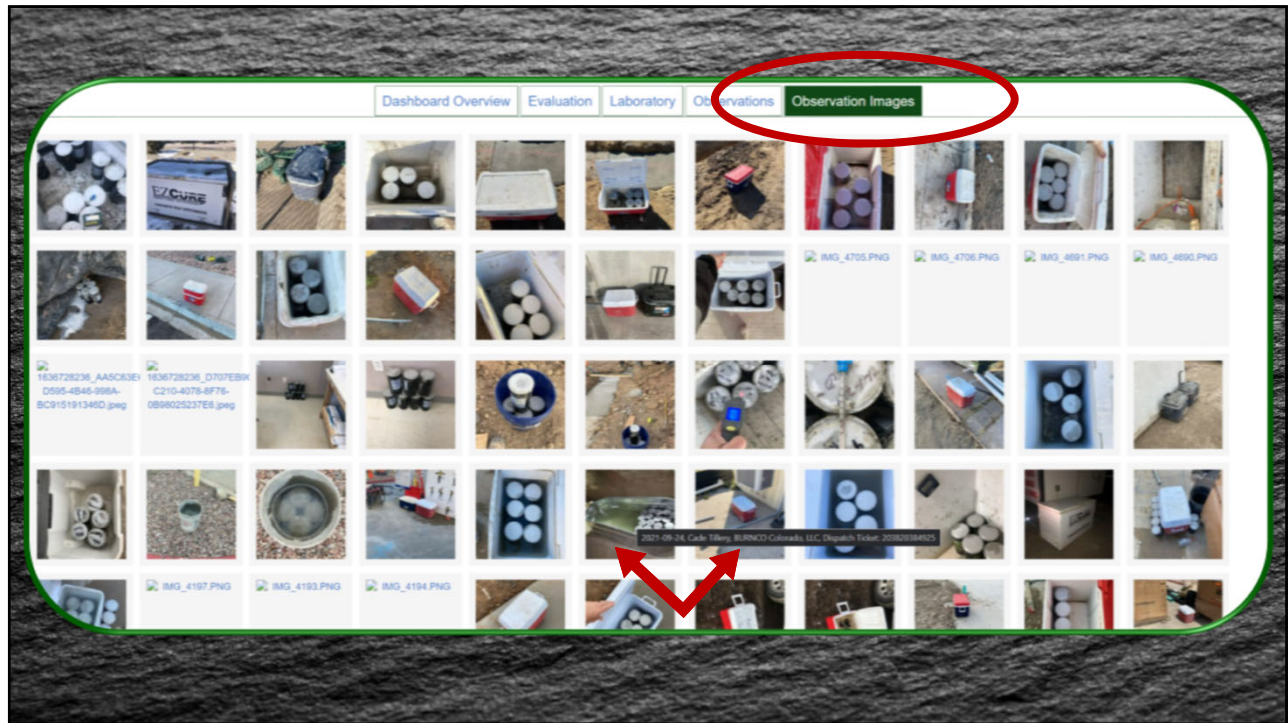


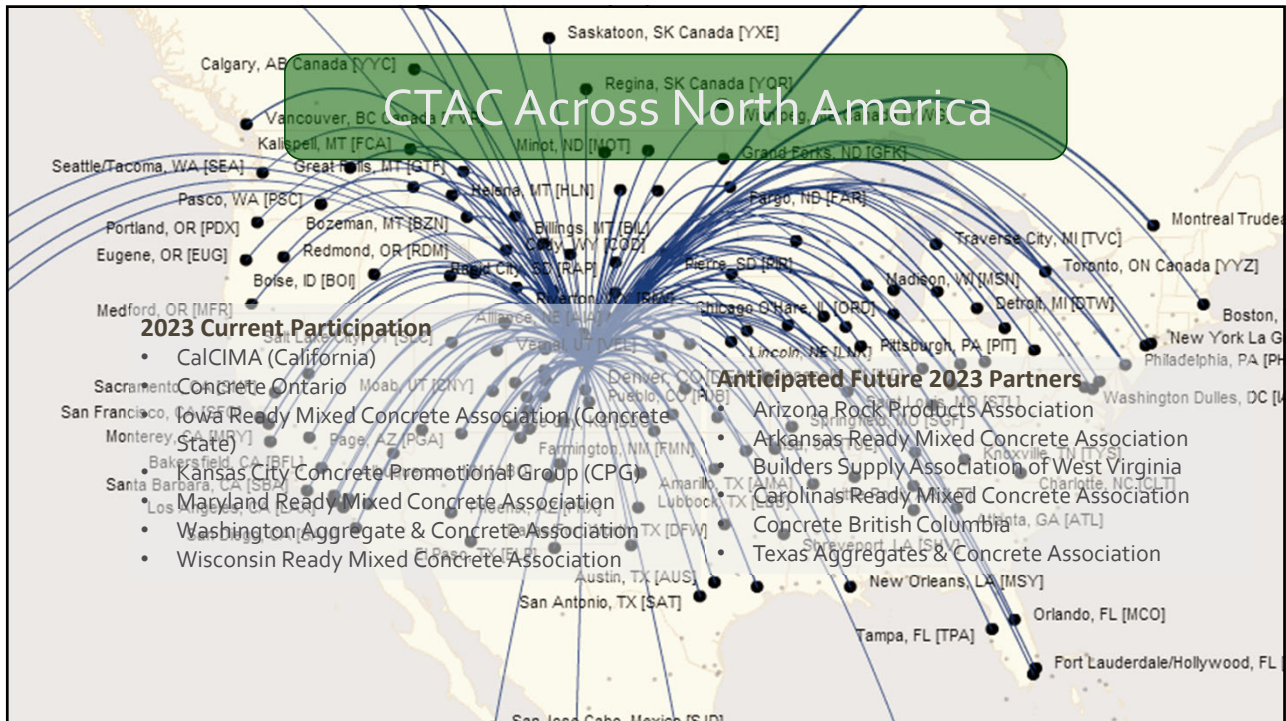
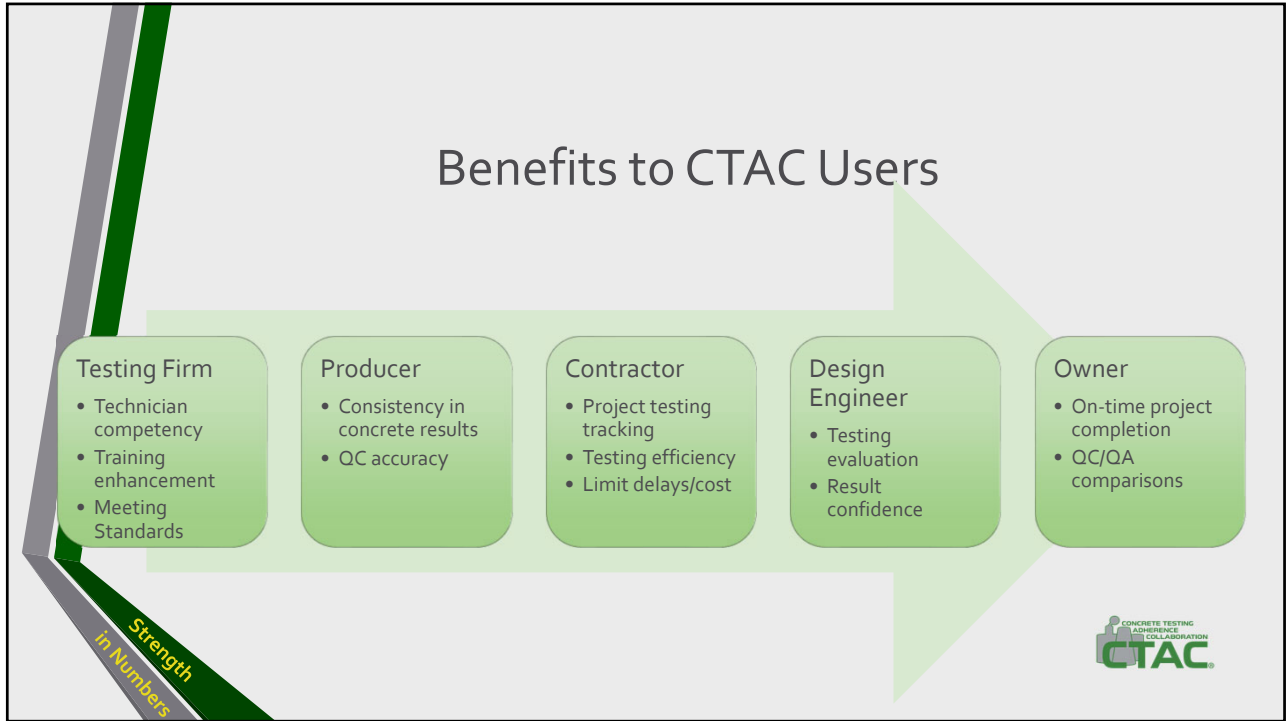
Dashboard Overview Evaluation **Laboratory** Observations Observation Images

10 entries Search:

ID	Date	Dispatch Ticket	Observer	Observer Company	Q1	Tester Name	Tester Company	Tester ACI Certification	Project Type	Q2	Sample Collected From
2125	4/1/2022	20427093	Blair Noyes	BURNCO Colorado, LLC	Yes	0	Kumar & Associates		b. Local/Municipality	Yes	c. At end of mixer truck discharge, prior to pump/belt
2127	4/1/2022	20427441	Jacob Carbajal	BURNCO Colorado, LLC	Yes	Wes	Kumar & Associates		c. Commercial/Industrial	Yes	a. At point of placement, end of mixer truck discharge
0713	3/31/2022	33327155	John Smith	United-Oldcastle Southwest	Yes	Justin Orgill	Kumar & Associates		Commercial/Industrial	Yes	At end of mixer truck discharge, prior to pump/belt (if
0714	3/31/2022	33327155	John Smith	United-Oldcastle Southwest	Yes	Justin Orgill	Kumar & Associates		Commercial/Industrial	Yes	At end of mixer truck discharge, prior to pump/belt (if
0715	3/31/2022	33327155	John Smith	United-Oldcastle Southwest	Yes	Justin Orgill	Kumar & Associates		Commercial/Industrial	Yes	At end of mixer truck discharge, prior to pump/belt (if
0716	3/31/2022	33327155	John Smith	United-Oldcastle Southwest	Yes	Justin Orgill	Kumar & Associates		Commercial/Industrial	Yes	At end of mixer truck discharge, prior to pump/belt (if
0717	3/31/2022	33327155	John Smith	United-Oldcastle Southwest	Yes	Justin Orgill	Kumar & Associates		Commercial/Industrial	Yes	At end of mixer truck discharge, prior to pump/belt (if
0718	3/31/2022	33327155	John Smith	United-Oldcastle Southwest	Yes	Justin Orgill	Kumar & Associates		Commercial/Industrial	Yes	At end of mixer truck discharge, prior to pump/belt (if
0719	3/31/2022	33327155	John Smith	United-Oldcastle Southwest	Yes	Justin Orgill	Kumar & Associates		Commercial/Industrial	Yes	At end of mixer truck discharge, prior to pump/belt (if
0720	3/31/2022	33327155	John Smith	United-Oldcastle Southwest	Yes	Justin Orgill	Kumar & Associates		Commercial/Industrial	Yes	At end of mixer truck discharge, prior to pump/belt (if

Showing 1 to 10 of 379 entries Previous 1 2 3 4 5 ... 38





Regional Comparisons

	CalCIMA	Concrete Ontario	CPG	CRMCA	IRMCA	WRMCA	Overall
Total Observations (Sept 2022 - Feb 2023)	108	61	178	43	12	32	434
Question							
Technician Certified	100%	98%	68%	93%	100%	59%	86%
Sampled in Accordance with ASTM C172 / CSA A23.2-1C	47%	56%	67%	74%	83%	41%	61%
Tested in accordance with ASTM / CSA Procedures	31%	57%	66%	77%	92%	44%	61%
Stored according to ASTM C31 / CSA A23.2-3C	14%	20%	24%	40%	33%	16%	24%
Which of the following was utilized?							
Nothing; specimens left in open environment	44%	12%	7%	9%	0%	3%	12%
Which type of temperature monitoring device was utilized in the curing environment?							
Nothing	79%	39%	38%	26%	42%	28%	42%

Strength
in Numbers



- Where there's a concrete pour, OBSERVE!
 - Document and DISCUSS on-site
- Reporting Dashboard for company and regional ENHANCEMENT



QUESTIONS?
COMMENTS?



www.concretetac.com
ctac@coloradocaa.org

JT Mesite, P.E.
Program Manager, CRMCA
jt@coloradocaa.org

Todd Ohlheiser
Executive Director, CRMCA
todd@coloradocaa.org

