

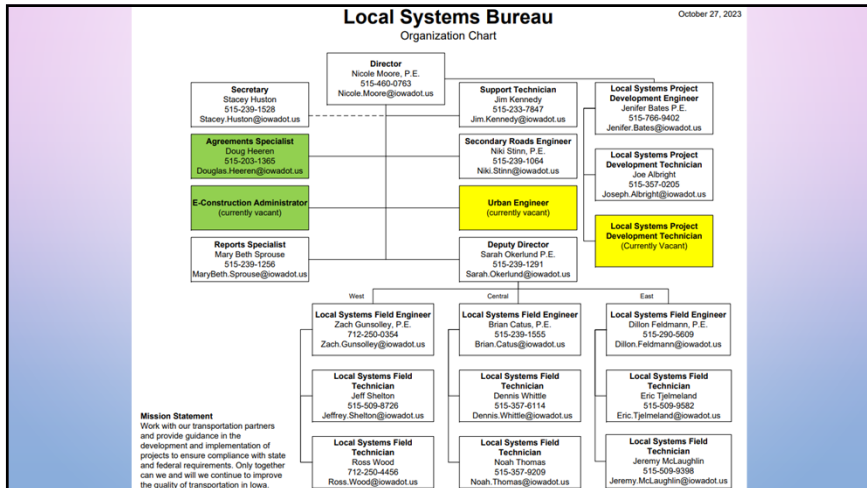
LOCAL SYSTEMS BUREAU UPDATE MUNICIPAL STREETS SEMINAR NOVEMBER 14, 2023

NICOLE MOORE, P.E.
IOWA DOT,
DIRECTOR, LOCAL SYSTEMS BUREAU

LOCAL SYSTEMS CULTURE

- Service Mentality – WE'RE HERE TO HELP YOU...
- Who We Serve and Collaborate With:
 - Cities: 941
 - Counties: 99
 - Consultants: numerous
- Provide Training and Guidance
- Be a Spokesperson for Iowa's Cities and Counties (LPAs) – their "Voice"
- Opportunity to BUILD POSITIVE RELATIONSHIPS with Cities, Counties, Consultants, Others
- Local Systems can play a beneficial role in the County, City and Consulting industry

Our mission is to work with our transportation partners and provide guidance in the development and implementation of projects to ensure compliance with state and federal requirements. Only together can we and will we continue to improve the quality of transportation in Iowa.



DOT PERSONNEL CHANGES

DISTRICT CONTACT WEBPAGE: [HTTPS://IOWADOT.GOV/DISTRICTS/DISTRICT-CONTACTS](https://iowadot.gov/districts/district-contacts)

Personnel Changes

- Tony Gustafson, Field Operations Director & Chief Engineer
- Allison Smyth, District 1 Engineer
- Nick Humpal, District 2 Engineer

WEBSITE

- o Design updated earlier this year
- o https://iowadot.gov/local_systems/
- o IJIA Information
- o Contact Us
 - o Phone numbers
- o Contact Local Partners
- o I.M.s
- o Local Systems Emails
- o Trainings & Videos
- o Pre- & Post-Letting Resources
- o Bid & Quote Thresholds
- o City Reports and Funding
- o Street Finance Report (SFR)
- o Equipment Rates
- o Maps
- o Emergency Relief (ER) Program

Just Google "Iowa DOT Local Systems"

WANT TO HEAR FROM US?!

ABOUT EACH SUBSCRIPTION TYPE

<p>LOCAL SYSTEMS GENERAL</p> <p>Choose this option to receive updates on news and information that affect both cities and counties. This may include Instructional Memorandum, Legislation, Trainings for Local Public Agencies, etc.</p>	<p>JOB OPPORTUNITIES</p> <p>Job opportunities: Local Systems is asked to send Job opportunities may include Iowa DOT positions, City positions, or County positions.</p>
<p>CITY/COUNTY</p> <p>City-related news and information, such as Street Finance Report, City Bridge Program, and various other items related to cities but not counties or consultants.</p>	<p>COUNTY/CITY</p> <p>County-related news and information, such as Annual Reports, Budget & Program, Farm-to-Market Funding, County HEP Funding, etc.</p>

https://iowadot.gov/local_systems/Local-Systems-Emails/Local-Systems-Emails

Reminder: We can send job advertisements through our Job Opportunities list.

LOCAL SYSTEMS TRAINING

- LOCAL SYSTEMS HOME
- IJA INFORMATION
- CONTACT US
- CONTACT LOCAL/FEDERAL PARTNERS
- INSTRUCTIONAL MEMORANDUMS AND FEDERAL AID GUIDE
- LOCAL SYSTEMS EMAILS
- TRAININGS & VIDEOS
- PRE-LETTING RESOURCES
- POST-LETTING RESOURCES

LOCAL SYSTEMS TRAINING & VIDEOS

View [Street Finance Report \(SFR\)](#) training options. In-person classes may be limited to room size. Additional classes may be added if the current offerings become full.

- 2023 Apple® Training
- Federal Aid Overview Seminar 2023
- 2022 Regional Spring Meeting

IOWA DOT CERTIFICATIONS AND RECERTIFICATIONS

Iowa DOT Technical Training and Certification Program (TTCP) provides training courses in the areas of construction and materials. The program includes certifications for agencies, industry producers, and consultants for highway materials testing and inspection. For additional details including the current TTCP Registration Book, program updates, and contact information visit the [TTCP website](#).

WEB-BASED REVIEWS AND OTHER CLASSES

Iowa DOT provides online access to a [variety of subject areas](#) at no-charge. These web-based trainings are offered and accessed through iDOT U. Visit the [Iowa DOT training](#) site to learn more.

FEDERAL-AID ESSENTIALS

More and more, transportation agencies must pursue better, faster, and smarter ways of doing business. [Federal Aid Essentials](#) offers a central online library of informational videos and resources, designed specifically for LPAs. Each video addresses a single topic, condensing the complex regulations and requirements of the Federal-aid Highway Program into easy-to-understand concepts and illustrated examples.

Note: The information in the videos was developed by the Federal Highway Administration (FHWA) for a national audience and is very general. Iowa may have more specific requirements that will need to be followed. Therefore, LPA Federal-aid projects in Iowa should always follow the procedures provided in our files.

https://iowadot.gov/local_systems/Trainings-Videos

LOCAL SYSTEMS TRAINING FEDERAL-AID OVERVIEW SEMINARS

- WHO SHOULD ATTEND? CITIES, COUNTIES, CONSULTANTS, MPO, RPA, OTHERS
- MAPS
- AGENDAS
- IN-PERSON TRAININGS
- **PLEASE ENCOURAGE ALL OF YOUR STAFF WHO WORK ON FEDERAL-AID PROJECTS TO ATTEND, AT LEAST FOR ONE DAY DEPENDING ON THEIR JOB DUTIES.**
- DATES AND LOCATIONS:
 - BOONE (CENTRAL REGION) – JANUARY 24-25, 2024
 - HIAWATHA (EASTERN REGION) – JANUARY 31-FEBRUARY 1, 2024
 - DENISON (WESTERN REGION) – FEBRUARY 21-22, 2024
- TO REGISTER IN IOWA DOT U, GO TO THE WEBSITE AND FOLLOW THE INSTRUCTIONS.

https://iowadot.gov/local_systems/Trainings-Videos

POST-LETTING RESOURCES

LOCAL SYSTEMS HOME

- LOCAL INFORMATION
- CONTRACTS
- CONTACT LOCAL/FEDERAL AGENCIES
- INSTRUCTIONAL MEMORANDUMS AND FEDERAL AID GUIDE
- LOCAL SYSTEMS TABLES
- TRAINING & VIDEOS
- POST-LETTING RESOURCES
- POST-LETTING RESOURCES

HELPFUL LINKS

As a reminder, Local Systems Instructional Memorandums (LIMs) provide assistance and guidance to LPAs. Chapter 4 is where you will find construction-related references.

- [Draft Procurement Aids Template](#)
- [Iowa DOT Construction Manual \(Remember LIM # 200 - Attachment 2 is a local agency administered version of Chapter 2\)](#)
- [POST-LETTING RESOURCES \(THIS PAGE\)](#)

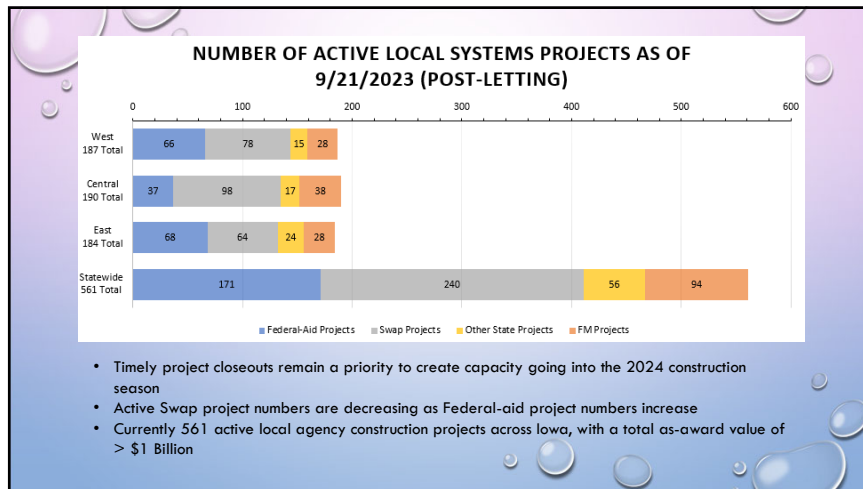
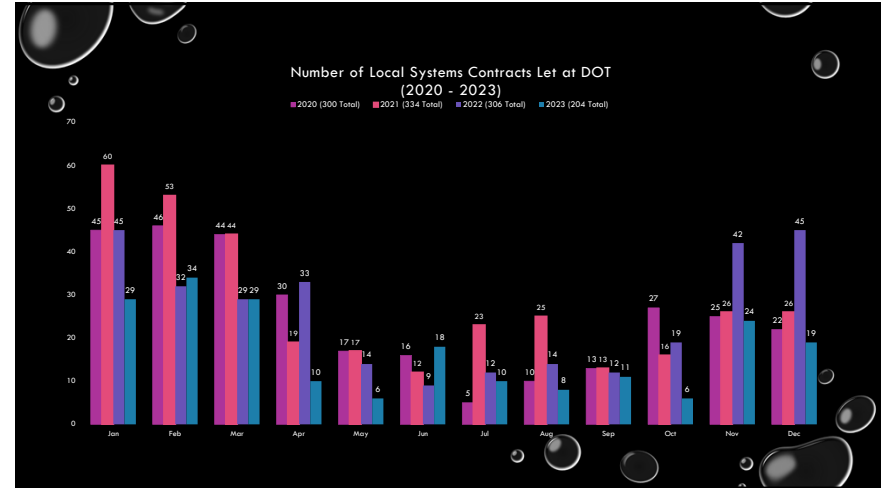
POST-LETTING RESOURCES

- FORMS AND MATERIALS INFORMATION
- DOC EXPRESS AND APPA
- INSPECTION WORKSHEETS (EXCEL)
- CONTRACT ADMINISTRATION TRAINING INFORMATION
- HELPFUL LINKS
- COUNTY REPORTS, FUNDING, RESOURCES
- CITY REPORTS, FUNDING AND RESOURCES
- BID AND QUOTE THRESHOLDS
- BRIDGE INFORMATION & RESOURCES


ADDITIONAL TOPIC SPECIFIC INSPECTION REFERENCES, RESOURCES AND TOOLS


- [Materials Approved Product List Enterprise \(MAPLE\)](#)
MAPLE contains a searchable database of the approved products, sources, producers, and suppliers of materials for Iowa highway projects.
- [Construction & Materials Earthwork and Erosion Control](#)
This website has a lot of great links related to erosion control including stormwater inspection information and seeding supply and application window updates.
- [Construction & Materials HMA Paving](#)
This website has a lot of great links for HMA paving, including the HMA Paving Field Inspection Manual and an HMA paving field inspection checklist.
- [Construction & Materials PCC Paving](#)
This website has a lot of great links for PCC paving, including the PCC Paving Field Inspection Manual and a PCC paving field inspection checklist.
- [Construction & Materials Structures and Foundations](#)
This website has a lot of great links for structures and foundations.

https://iowadot.gov/local_systems/Post-Letting-Resources/Helpful-Links



FEDERAL DISCRETIONARY GRANT REMINDERS





FEDERAL-AID FORMULA FUNDS VS GRANTS

- **FEDERAL-AID "FORMULA" FUNDS:**
 - STBG
 - HBP (COUNTY & CITY)
 - TAP
 - ICAAP


"Business as Usual": These Federal Funds are distributed through pre-established formulas to the various states and then to the Cities and Counties through Iowa-defined processes. Local Systems I.M.'s and the Stewardship and Oversight Agreement governs processes and procedures with Iowa DOT acting as the "pass through" with oversight responsibilities. Funding Agreements from Field Engineer.

- **FEDERAL-AID GRANTS:**
 - TIGER/BUILD/RAISE
 - BIP
 - SS4A
 - INFRA
 - MANY MORE...

"Grant Specific Requirements": All discretionary grants are application based, unique, and come with additional strings (reporting and such) above and beyond typical formula funded Federal-aid projects. Read the Notice of Funding Opportunity (NOFO) carefully. **Those additional strings become the grant recipient's responsibility.** Most grant agreements will mimic grant applications, including proposed funding set-ups. Grant agreements are between the grant recipient and FHWA.

FEDERAL-AID GRANT APPLICATION REMINDERS

- **"NON-FEDERAL MATCH" or "LOCAL MATCH"** included in a grant application **BECOMES FEDERALIZED** and must **FOLLOW FULL FEDERAL-AID PROCESSES AND PROCEDURES.**
 - This includes following [I.M. 3.310](#), Federal-aid Participation in Consultant Costs, if included in the grant as "match"
 - Plan 12+ months until costs can begin being incurred after grant award notification
 - Be mindful of Federal-aid programs (Bridge & STBG); include appropriately in application
 - Exception: STBG to Cities through RPA = Federal-aid Swap
- **REALLY IMPORTANT** to talk through proposed funding matches with the Iowa DOT **BEFORE** submitting any grant applications
 - Do NOT promise Swap funding as a matching fund source (unless the RPA has already awarded STBG-Swap funding)
 - Do NOT promise PE or CE as a non-federal match unless you plan to wait for federal approval to proceed and you plan to follow the Federal-aid consultant selection process
- Keep funding as simple and clean as possible (Construction only if possible)
- Reach out to others who have been successful
- Attend Federal-aid Overview Seminars &/or hire an experienced Team



Apply for DOT Grants
Resources to help understand the federal grant-making process and key federal requirements

[FHWA Grant Navigator](#)

CITY BRIDGE PROGRAM UPDATE

CITY BRIDGE PROGRAM UPDATE

FFY 2024 CITY BRIDGE PROGRAM

- Funding Cap was RAISED to \$1.5 Million
- Cities Offered Bridge Funding = 51
- Cities Accepted Offers = 37
- Cumulative City Bridges Funded since 1979 = 527

FFY 2025 CITY BRIDGE PROGRAM

- Included requests received from Oct 2, 2022 - Oct 1, 2023
- 33 bridges added to the candidate list this cycle
- Will use the new Priority Points Calculations

PER I.M. 1.100, SUBMIT REQUESTS TO:

JENIFER.BATES@IOWADOT.US

- On City Letterhead
- FHWA Bridge Number
- Route Carried
- Feature Crossed
- Cost Estimate
- City Official Contact Info

Minimum Requirements to Qualify

- ✓ Only Federal Bridges (>20')
- ✓ Located Within City Limits
- ✓ Open to Traffic or Closed <10 years
- ✓ Rated "Poor" condition
- ✓ ADT > 25 vpd

CITY BRIDGE PROGRAM UPDATE

UPDATED PRIORITY RANKING SHEET

- With NBIS changes, Sufficiency Rating can no longer be calculated
- Worked with APWA Transportation Committee to change the ranking method based on data availability while keeping the rankings consistent with previous method
- Added Bonus Points to help boost the rankings of Fracture Critical Structures

Attachment A to I.M. 1.100
February 10, 2023

City Bridge Priority Point Rating Worksheet

FHWA Structure Number: City:
 Inspection date used: Estimated improvement cost:

Priority Points

Number of Poor (13) Ratings (S&A Items 61, 68, 69):
 0 = 0 points 2 = 7
 1 = 5 3 = 10 Poor Ratings: (# Ratings) = (# Points)

Number of Poor (21) Ratings (S&A Item 62):
 0 = 0 points
 1 = 7 Poor Ratings: (# Ratings) = (# Points)

Estimated Average Daily Traffic:
 < 25 = 0 points 3001 - 4000 = 6
 25 - 250 = 1 4001 - 6000 = 7
 251 - 500 = 2 6001 - 8000 = 8
 501 - 1000 = 3 8001 - 10,000 = 9
 1001 - 2000 = 4 10,000 - 15,000 = 10
 2001 - 3000 = 5 Ext. ADT: (ADT) = (# Points)

Bypass, Detour Length (Out-of-distance Travel) (miles):
 < 1 = 0 points 2-3 x 4 = 8
 1-1.5 = 4 3-4 x 5 = 10
 2-2.5 = 6 4-5 x 6 = 10
 3-3.5 = 8 5-6 x 7 = 10 Detour: (# Miles) = (# Points)

Bridge Posting (S&A Item 70 value):
 1 = 0 points 2 = 6
 2 = 2 3 = 8
 3 = 4 4 = 10 Bridge Posting: (Points) = (S&A Item 70 value) = (# Points)

Bonus Points:
 Non-redundant Steel Tension Member (formerly known as Fracture Critical) (S&A Item 92A value):
 N = 0 points
 Y = 5

Fracture Critical Bonus: (# Points)

Total Points = (Total # Points)
(40 points maximum)

CITY BRIDGE PROGRAM UPDATE

QUALIFIED BRIDGE LIST (QBL) FOR CITIES ADDED TO WEBSITE: https://iowadot.gov/local_systems/Bridge-Information-Resources

FEY24 City Bridge Candidate Award List
 This spreadsheet shows the bridges that were on the City Bridge Candidate List in the most recently closed funding cycle. Highlighted bridges were offered funding.

Qualifying Bridge List (QBL) - Cities Only
 This spreadsheet shows the structures that qualify for Highway Bridge Program funding as detailed in I.M. 1.100. To assemble this listing, the DOT extracts information from SIMS at the end of each calendar year. The data is then passed to FHWA. FHWA reviews the data and returns a finalized list to the DOT in approximately June of each year. Therefore, cities can expect that the data contained in this sheet may be a year old or more depending on when the last inspection was done on a structure and entered into SIMS.

LEGEND

This bridge has an accepted detour routing agreement in place
 This bridge is currently on the City Bridge Candidate List
 This bridge has been removed from the Candidate List by request

Criteria Used 2023 QBL and merged with up through FY 2022 candidate list as of 8/11/23. Items in Pink boxes, H21-23, not closed more than 10 years, and Detour type 4 (C3) and 2 (within City limits) only. Note: this list only includes county owned structures within 1/2 mile but are currently on the candidate list.

Filters: Record Type, Archived, Closed, Years Since Reconstructed, Owner, Good/Fair/Poor, ADT

1	2	3	4	5	6	7	8	9	10	11	12	13	14	15	16	17	18	19	20	21	22	23	24	25	26	27	28	29	30	31	32	33	34	35	36	37	38	39	40						
State Code	Structure Number	Record Type	County Code	County Code Adj.	County Name	Place Code	City Name	Features Intersected	Facility Carried By Structure	Latitude	Longitude	Bypass/ Detour Length	Owner	Functional Class of Inventory	Year Built	Average Daily Traffic	Year Of Roadway Daily Traffic	Design Load	Approach Width	Approach Guardrail	Approach Ends																								
197	88	1	49	23	Dallas	35	ADEL	BUTLER CREEK	12TH ST	41379069	094013913	2	4	7	1807	1028	2021	0	136	1	0																								
197	110	1	83	42	Hardin	77	AUDEN	IONA RIVER	MAIN ST	42312646	09023338	5	4	7	1916	1960	2022	0	79	0	0																								
197	150	1	167	84	Sioux	130	ALTON	FLOID RIVER	FM	42888824	090600214	5	4	17	1954	814	2021	2	101	1	1																								
197	180	1	167	84	Sioux	130	ALTON	DRANAGE	GARFIELD ST	42392317	090160004	2	4	19	1900	212	2022	0	76	0	0																								
197	270	1	105	53	Zones	165	ANANOGSA	DEVONSON CREEK	1ST ST SE	42062446	091546801	0	4	17	1900	817	2021	5	88	0	0																								
197	330	1	9	5	Audubon	300	AUDUBON	BLUE GRASS CREEK	DEVONSON ST	41422680	090426267	2	4	5	1935	271	2021	0	94	0	0																								
197	552	1	111	56	Linn	2897	FORT MADISON	FORE CREEK	360 ST	40831443	090132116	3	4	15	1966	328	2022	0	75	0	0																								
197	670	1	169	82	Scott	587	BETTERDORF	DUCK CREEK	18TH ST	41322034	09002050	2	4	16	1982	4210	2021	4	113	N	N																								
197	780	1	9	5	Audubon	821	BRAYTON	DRANAGE	LOCAL	41222802	090531138	5	4	9	1945	226	2021	5	58	0	0																								
197	830	1	157	79	Popeye/okak	670	BROCKLYN	LITTLE BEAR CREEK	OKCHARD ST	41413224	092270151	3	4	9	1912	840	2021	0	55	0	0																								
197	930	1	2	Adams	1867	CARSON	MIDDLE WOODWAY RIVER	8 STREET	10000000	40309002	094847472	6	2	n/a	n/a	n/a	2021	4	138	0	0																								

ALL-SYSTEMS OVERWEIGHT PERMIT

NEW ALL-SYSTEMS OVERWEIGHT PERMIT

Available for purchase by haulers 01/01/23

- New Annual All-Systems Overweight Permit
 - Annual All-Systems Oversize Permit already exists for \$160
- Different than the Governor's Harvest/Planting Proclamation
- Increases gross weights by 12% over tables in Iowa Code [321.463](#)
 - Maximum axle weights remain unchanged
 - Legal dimensions may not be exceeded
- Indivisible and divisible loads
- Not limited to ag commodities
- Does not apply to implements of husbandry
- Permits issued by the State
- Annual permit (12 months from date of issuance)

Fact sheet available at <https://iowadot.gov/mvd/motorcarriers/all-systems-overweight-permits-fact-sheet.pdf>

IOWA DOT

FACT SHEET

ANNUAL ALL-SYSTEMS OVERWEIGHT PERMIT FOR COMMERCIAL & FARM VEHICLES

EFFECTIVE JANUARY 1, 2023.
 The Iowa DOT is authorized to issue an annual permit for overweight divisible and indivisible loads.
 This annual permit option provides flexibility and is efficient for customers.

FACTS ABOUT THE NEW PERMIT:

- Applies for unladen trips on all state roads, including the interstate system, and certain city/county roads. Cities and Counties must designate which roads are authorized for travel under this permit.
- Refer to the Iowa DOT's All Systems Overweight Permits map for the list of city and county routes that are authorized.
- The map can be found at: <https://iowadot.com/infrastructure/overweight-permits>
- Valid for 12 months from date of issuance.
- Cost = \$500
- Maximum weight = 12% over current maximum legal weight based on number of axles and distance.
 - 5 Axle maximum - 89,000 lbs.
 - 6 Axle maximum - 120,800 lbs.
 - 7 Axle maximum - 107,520 lbs.
- Maximum axle weight = 20,000 lbs.*
 - *A single axle on one of the front, middle and single tandem axle of the trailer or semitrailer may be up to 40,000 lbs. if the unit gross has at least 4 axles.
- Maximum width = 8'6"
- Maximum height = 13'6"
- Maximum length = legal maximum limits for vehicle and trailer.
- Valid for BOTH divisible and non-divisible loads.

WHERE CAN I GET THE NEW PERMIT?

If you are applying online at <https://iowadot.com/infrastructure/overweight-permits>, Cities and Counties must designate which roads are authorized for travel under this permit.

DO I NEED TO BE REGISTERED FOR THE GROSS WEIGHT OF THE LOAD I AM HAULING WITH THIS PERMIT?
 Vehicles traveling under this or any other permit must be registered for the gross weight of the vehicle and the load under Iowa law. Trucks or combinations transporting raw agricultural products are allowed to operate in excess of their registration weight by up to 25 percent when in Iowa.


AS OF JANUARY 1, 2023, CAN I TRAVEL ON ALL ROADS IN IOWA UNDER THIS PERMIT?
Primary (state) roads: Yes, you can travel on the primary road system (state roads) but you must review the map found on the DOT's website to check for bridge embargoes or construction that may affect your route.
Secondary (city or county) roads: This permit may be used on county or city roads but ONLY if the county or city designates their road as authorized for travel under this permit. While we expect some secondary roads will be available for travel on January 1, 2023, counties and cities have until July 1, 2023, to identify which secondary roads they will include under this permit. You will need to go to the map in the following link to see which county and city roads are included before you travel. <https://iowadot.com/infrastructure/overweight-permits>

QUESTIONS AND ANSWERS
WHEN CAN I GET THE NEW PERMIT?
 The permit will be made available on January 1, 2023.

PAGE 1 OF 2

ALL-SYSTEMS OVERWEIGHT PERMIT - REVENUE

- \$500 PERMIT FEE
 - First 75% of permit fees taken off-the-top and deposited into the Counties' Secondary Road Funds
 - Cities will receive 20% of the remaining 25% which will be distributed as part of the RUTF
- Guidance was emailed out through Local Systems Email list on May 31, 2023



Senate File 2376

AN ACT
RELATING TO ANNUAL ALL-SYSTEMS PERMITS ISSUED BY THE DEPARTMENT OF TRANSPORTATION FOR VEHICLES OF EXCESSIVE WEIGHT, AND INCLUDING EFFECTIVE DATE PROVISIONS.


BE IT ENACTED BY THE GENERAL ASSEMBLY OF THE STATE OF IOWA:

Section 1. Section 332.2, Code 2022, is amended by adding the following new subsections:

NEW SUBSECTION. 18. The treasurer of state, before making the allotments provided for in this section, shall credit monthly from the road use tax fund to the state department of transportation seventy-five percent of the moneys deposited in the fund pursuant to section 332E.14, subsection 1, paragraph "c)". The department shall distribute such moneys to counties

ALL-SYSTEMS PERMIT AMENDMENT (SF 527)

- Paved Farm-to-Market Routes and "Designated Truck Routes" shall be valid for the permit starting July 1, 2025.
 - For the purposes of this permit, Truck Routes are either: (1) those routes designated in the City's Code of Ordinances (Chapter 66) as a Truck Route or (2) those routes physically signed as Truck Routes.
- Any valid route must connect "with a highway or street under the jurisdiction of the state, or with another highway or street upon which movement under an all-systems permit is valid that ultimately connects with a highway or street under the jurisdiction of the state".
 - In other words, a valid route must provide a valid path to a state route.
- Permit holders may "operate a permitted vehicle over the most direct route between the location where the vehicle is loaded or is to be unloaded and the nearest highway or street upon which movement under an all-systems permit is valid."
 - This piece effective now.



Senate File 527

AN ACT
RELATING TO VEHICLES OF EXCESSIVE SIZE AND WEIGHT, INCLUDING HIGHWAYS AND STREETS UPON WHICH MOVEMENT OF SUCH VEHICLES IS PERMITTED AND WARNING LIGHTS ON SUCH VEHICLES.

BE IT ENACTED BY THE GENERAL ASSEMBLY OF THE STATE OF IOWA:

Section 1. Section 321E.3, subsection 1, paragraph b, Code 2023, is amended to read as follows:

b. (3) The department may issue all-systems permits under section 321E.4 which are valid for movement on all paved highways or streets under the jurisdiction of either the state, except the interstate road system if prohibited under section 321E.4, or those and except any highways or streets under the jurisdiction of local authorities that have indicated upon which an all-systems permit is not valid as determined by the applicable local authority if the local authority indicates such highways and streets to the department in writing, including by means of electronic communication, those streets or highways for which an all-systems permit is

ALL-SYSTEMS OVERWEIGHT PERMIT - PARTICIPATION

- Participating route updates must be communicated to Analytics at the DOT
 - Truck routes sooner rather than later
 - FM Extensions in cities < 2,500
 - Cities need to work with/through counties
 - Counties should submit route decisions
- Routes displayed on map for carriers on MVE website
 - Roads are color coded
 - <https://iowadot.gov/mvd/motorcarriers/Maps>
- Bridge restrictions will be displayed on the map
 - Bridge restriction information needs to be entered into the All-systems Permit field in SIMS
 - The map pulls the information from SIMS and displays it automatically.
- Guidance to cities – letter sent 5/31/23
 - FM extensions in cities < 2,500
 - Cities are directed to work with their counties

MAPS

ALL SYSTEMS PERMIT MAPS

- All systems overweight permit map
- All systems oversize permit route map

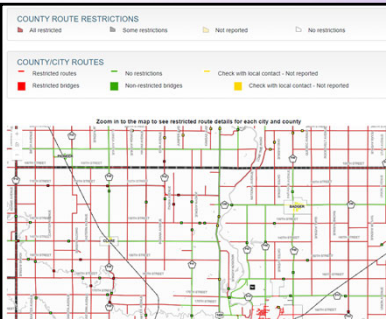
COUNTY ROUTE RESTRICTIONS

All restricted Some restrictions Not reported No restrictions

COUNTY/CITY ROUTES

Restricted routes No restrictions Check with local contact - Not reported
 Restricted bridges Non-restricted bridges Check with local contact - Not reported

Zoom in to the map to see restricted route details for each city and county




NEW LOCATION FOR ALL-SYSTEMS OVERWEIGHT PERMIT INFO

- County Reports, Funding, Resources
- City Reports, Funding and Resources
 - City Resources

ALL-SYSTEMS ANNUAL OVERWEIGHT PERMIT

- Letter to Cities – Summary of Legislation (05/31/23)
- Motor Vehicle Division Informational Memo # 22-22
- Fact Sheet
- All-Systems Annual Overweight Permit Map
- All-Systems Annual Overweight Permit City Request Form
- Senate File 2376 (original legislation)
- Senate File 527 (revision to original legislation)



May 31, 2023

Dear Cities,

On May 23, 2022, Governor Reynolds signed into law Senate File 2376, which became effective January 1, 2023. It created an Annual All-Systems Overweight Permit. Previous legislation had allowed the state to issue all-systems permits for oversize loads but not overweight loads. The May 23, 2022 legislation authorized the state to issue permits for certain overweight loads as described in the permit facts section below. Cities were not mandated to indicate valid or non-valid routes in this original legislation.

Note: Prior to the legislation described here, annual All-Systems Permits could only be issued for oversize loads, and they only applied to indivisible loads. Local agencies could opt in or out with no additional requirements. There was no annual All-Systems permit for overweight loads. All overweight loads were required to obtain separate individual permits from each jurisdiction whose routes they traveled on, and those loads could only be indivisible.

OTHER MISCELLANEOUS INFO AND UPDATES

- ## NEPA CLASSIFICATION INFORMATION
- AS PART OF THE FEDERAL-AID PROCESS, NEPA/SHPO CLEARANCES MUST BE IN PLACE **BEFORE** CHECK PLANS ARE SUBMITTED
 - THE DATES IN I.M. 3.010 ARE **MINIMUMS**
 - MOST RECENT HISTORIC BRIDGE SURVEY WAS COMPLETED IN 2011 FOR BRIDGES CONSTRUCTED 1970 AND EARLIER
 - NEW BRIDGE SURVEY UNDERWAY FOR BRIDGES BUILT THROUGH 1985. EXPECTED LATE 2025
 - ALLOW TIME FOR CULTURAL RESOURCE INVESTIGATION PER I.M. 4.120
 - NEPA REVIEWS ARE STILL TAKING LONGER THAN NORMAL DUE TO STAFF TURNOVER
 - NEPA REVIEWS ARE CURRENTLY TAKING APPROXIMATELY 16-20 WEEKS, ON AVERAGE

- ## APPIA UPDATES/REMINDERS
- Required for use by counties since April 2022 letting - **CITY'S CAN USE, BUT NOT REQUIRED AT THIS TIME**
- SOME REMINDERS FOR IF YOU ARE USING APPIA:
- **Email Niki Stinn** if you have training needs (niki.stinn@iowadot.us)
 - Contact Doug Heeren (douglas.heeren@iowadot.us) for "easy button" set-up files (*.json) on DOT let projects
 - Project setup review required prior to Advancing to Construction
 - Niki Stinn or Doug Heeren
 - **Step by step picture instruction manuals** are available on local systems website
 - Consultants must purchase their own licenses
 - Cities should not add Consultants to their accounts
 - Cities should set up the project and then give the Consultant access to the project
 - If that is not practical, Consultants may set up the project with written correspondence saying they will give the City project files in the event of a dispute



LOCAL SYSTEMS

INSTRUCTIONAL MEMORANDUMS & FEDERAL-AID GUIDE

FEDERAL-AID PROJECT DEVELOPMENT GUIDE FOR LOCAL PUBLIC AGENCIES

NON-FEDERAL-AID PROJECT DEVELOPMENT GUIDE FOR LOCAL PUBLIC AGENCIES

REVISION NOTICES

When the Guide and/or IMs are revised, a revision notice is issued and provides a brief description of each. The following recent revisions:

- Revision No. 2023-03 (July 7, 2023)
- Revision No. 2023-02 (March 10, 2023)
- Revision No. 2023-01 (February 10, 2023)
- Revision No. 2022-05 (November 4, 2022)
- Revision No. 2022-04 (July 12, 2022)
- Revision No. 2022-03 (June 20, 2022)

MOST NOTEWORTHY I.M. UPDATES

- I.M. 3.060, PROJECT NUMBERS
 - Added five (5) new project numbers
- I.M. 3.215, URBAN DESIGN GUIDELINES
 - New I.M.
- I.M. 3.310, FEDERAL-AID PARTICIPATION IN CONSULTANT COSTS
 - Added clarifications and info on project documentation
- I.M. 3.320, CONSULTANT EVALUATIONS
 - Simplified Form 517024
- I.M. 4.110, THREATENED AND ENDANGERED SPECIES
 - Clarifying the need to list whether species or habitats are being impacted by the project, then whether they will require mitigation
 - Adding information on guidance from US Fish and Wildlife
 - There will also be a new Determination of Effect of Threatened and Endangered Species form, Form 760005, on <https://iowadot.seamlessdocs.com/sc/>

SIGN REPLACEMENT PROGRAM FOR CITIES AND COUNTIES (SRPFCC)

- PURPOSE:** Funding to purchase REPLACEMENT signs, posts, and hardware for warning, regulatory, and school signs.
 - Reflective strips (for chevron and stop sign posts only)
 - \$1,000 annually for Cities (of the annual grant max)
 - \$2,000 annually for Counties (of the annual grant max)
 - Only signs in need of replacement are eligible.
- WHO:** Counties and Cities
- HOW TO APPLY:** Complete application
 - Turn in list of replaced or proposed signs (with financial hardship waiver only)
 - Only one application allowed per year per agency
- AMOUNT:** Annual grant maximum: counties = \$10,000, cities = \$5,000
 - Reimbursement based on list of submitted signs replaced over the preceding year
 - Standard costs per sign set by program administrator
- MORE INFO:** https://iowadot.gov/local_systems/city-reports-funding-and-resources/sign-replacement-program
- DETAILS:**
 - First year, open statewide
 - Thereafter, first come, first serve on a regional "early bird" basis

Applications available and accepted beginning January 2

Reimbursements not available until July 1

HIGHWAY SAFETY IMPROVEMENT PROGRAM - HSIP-LOCAL



- PURPOSE:** Funding for low-cost, systemic safety improvements on rural roads
 - Goal of reducing lane departure and intersection crashes
- WHO:** Counties and Cities
- HOW TO APPLY:** Application available at <https://iowadot.gov/traffic/sections/hsip>
 - Deadline: November 15
 - Funding available in following fiscal year
- AMOUNT:** \$5 million annually (whole program)
 - Funds are still swap
 - Funds up to 110% of engineer's estimate (no match required)
- MORE INFO:** <https://iowadot.gov/traffic/sections/hsip>



INTERACTIVE MAPS

DATA

- STATE MAP OF COUNTY AND CITY
- CITY AND COUNTY MAPS
- STATE MAPS
- TRAFFIC & SAFETY
- TRAFFIC & SAFETY MAPS
- ORDER MAPS
- CONTACT INFORMATION
- LINKS AND RESOURCES

Iowa Highway Networks

- Federal Functional Classification
- Commercial/Industrial Network
- Farms to Markets
- National Highway System
- Planning Corridor

All Iowa Bridges

ALL IOWA BRIDGES

TOTAL NUMBER OF BRIDGES 23,799

CONDITION OF THE BRIDGES

- Good - 9,304
- Fair - 9,896
- Poor - 4,599

SERVICEABILITY OF THE BRIDGES

- Non Deficient - 19,200
- Structurally Deficient - 4,599

RESTRICTIONS IN PLACE

- Unrestricted - 18,617
- Restricted - 4,793
- Closed - 389

BRIDGE INTL. LEGEND

- Bridge Functionality
- Bridge Condition
- Bridge Location

[HTTPS://IOWADOT.MAPS.ARCGIS.COM/HOME/INDEX.HTML](https://iowadot.maps.arcgis.com/home/index.html)



THANK YOU FOR YOUR TIME AND ATTENTION

NICOLE MOORE, P.E.
DIRECTOR,
LOCAL SYSTEMS BUREAU