

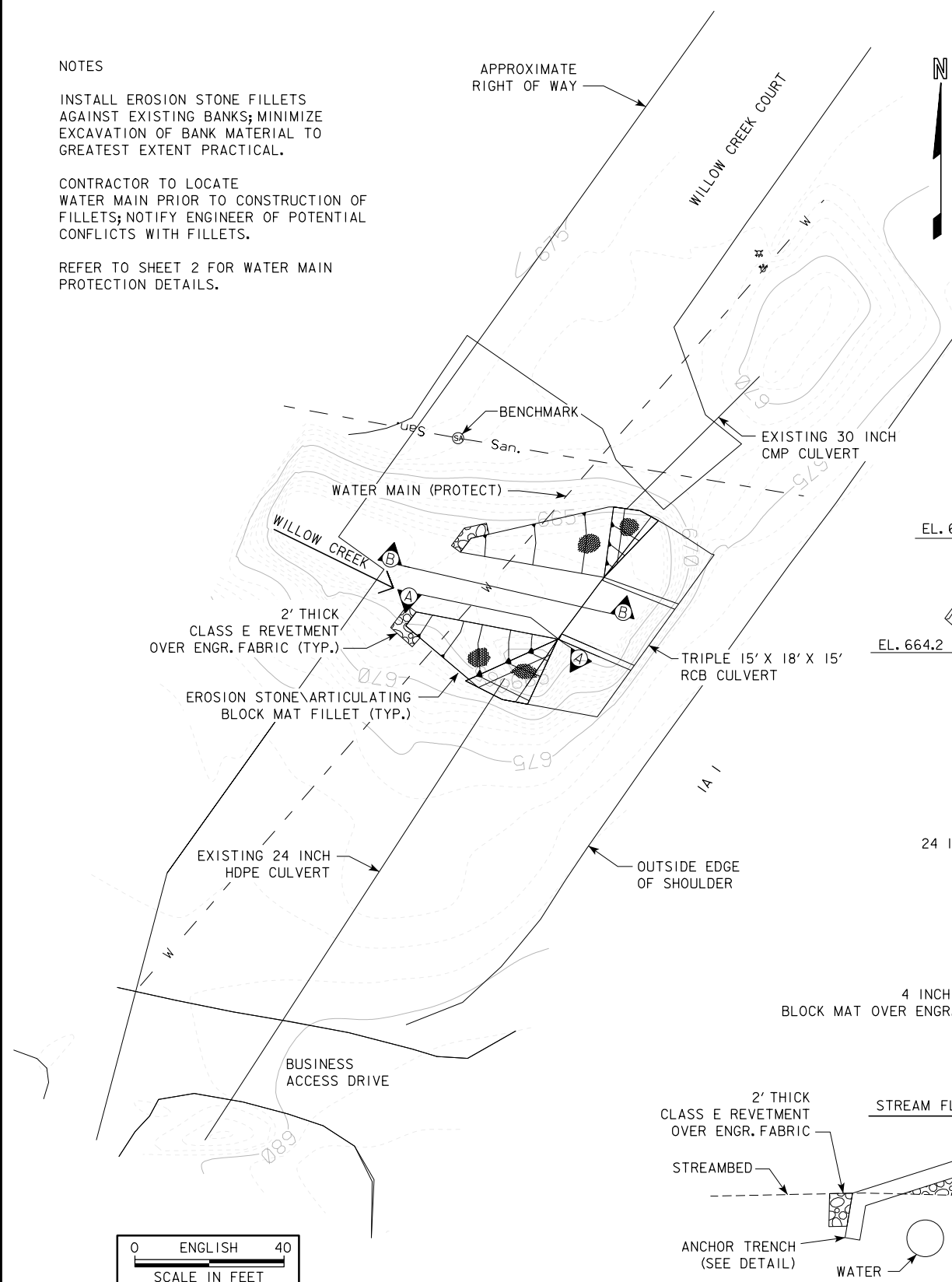
BENCHMARK: TOP OF SANITARY SEWER MANHOLE CASTING, ELEVATION 673.51

**NOTES**

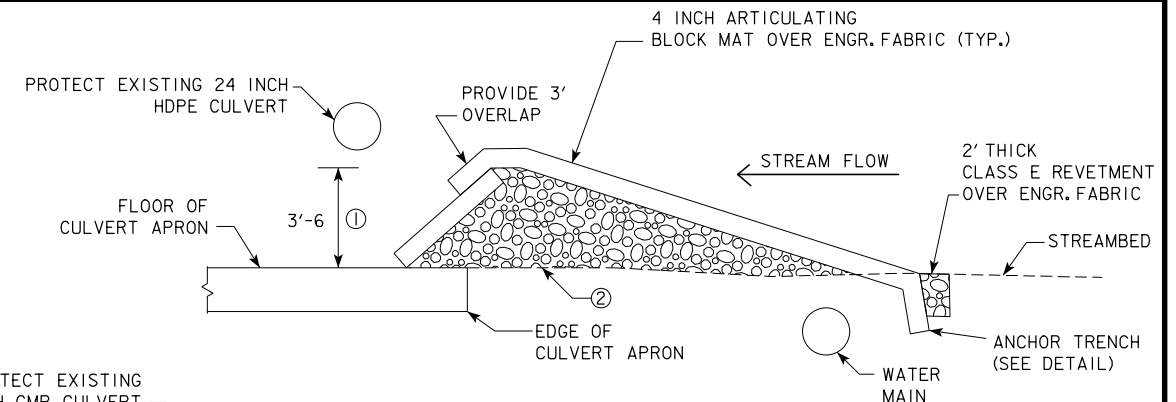
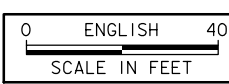
INSTALL EROSION STONE FILLETS AGAINST EXISTING BANKS; MINIMIZE EXCAVATION OF BANK MATERIAL TO GREATEST EXTENT PRACTICAL.

CONTRACTOR TO LOCATE WATER MAIN PRIOR TO CONSTRUCTION OF FILLETS; NOTIFY ENGINEER OF POTENTIAL CONFLICTS WITH FILLETS.

REFER TO SHEET 2 FOR WATER MAIN PROTECTION DETAILS.

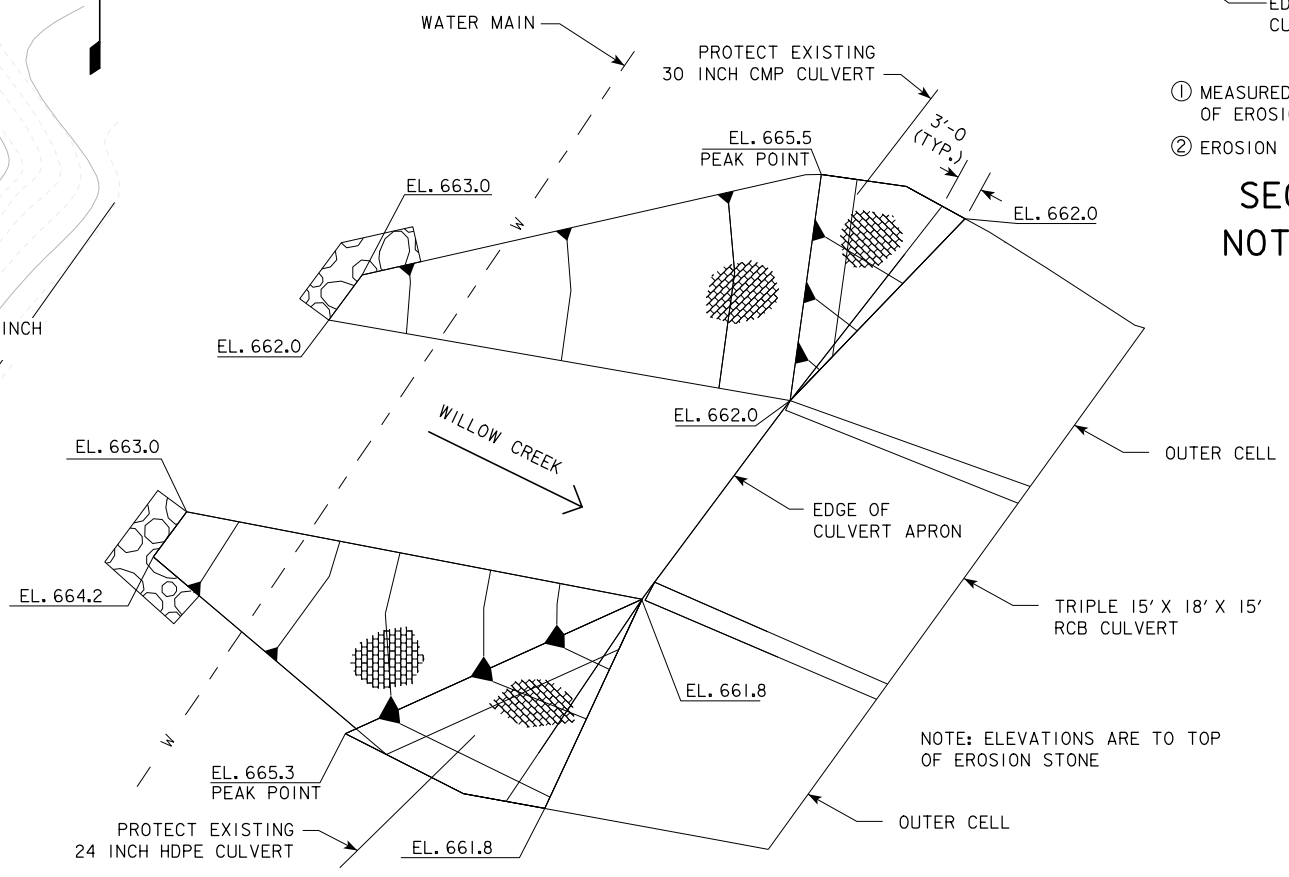


**SITUATION PLAN**

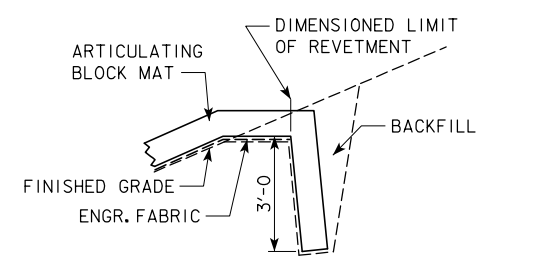


- ① MEASURED FROM BASE TO PEAK OF EROSION STONE
- ② EROSION STONE OVER ENGR. FABRIC

**SECTION A-A  
NOT TO SCALE**



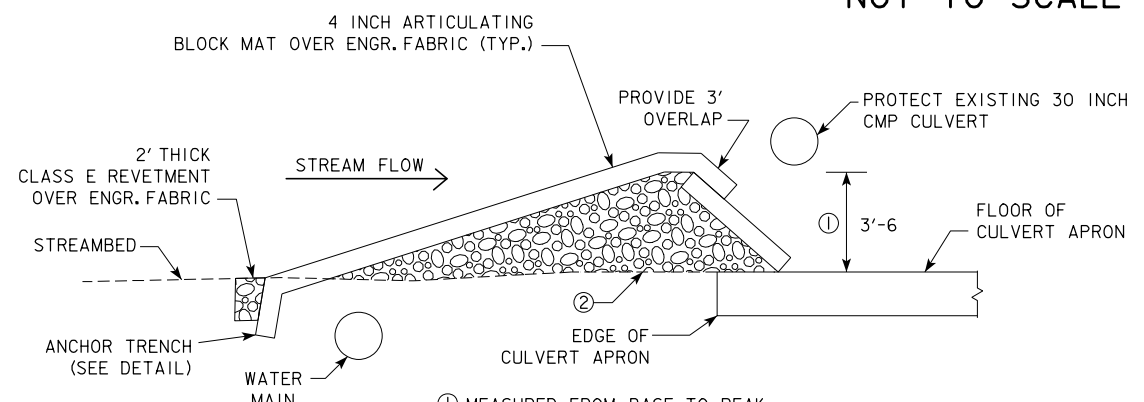
**EROSION STONE\ARTICULATING BLOCK MAT  
FILLET DETAIL  
NOT TO SCALE**



**SECTION THROUGH ANCHOR  
TRENCH  
NOT TO SCALE**

**LOCATION**

IA 1 OVER WILLOW CREEK  
T-79N R-6W  
SECTION 20  
WEST LUCAS TOWNSHIP  
JOHNSON COUNTY  
BRIDGE MAINT. NO. 5283.95001  
LATITUDE 41.640206°  
LONGITUDE -91.560369°



- ① MEASURED FROM BASE TO PEAK OF EROSION STONE
- ② EROSION STONE OVER ENGR. FABRIC

**SECTION B-B  
NOT TO SCALE**

DESIGN FOR  
**INLET MODIFICATIONS**  
**TRIPLE 15' - 18' - 15' X 12' RCB CULVERT**  
**SITUATION PLAN**  
STATION 115+30.50  
**JOHNSON COUNTY**  
IOWA DEPARTMENT OF TRANSPORTATION - HIGHWAY DIVISION  
DESIGN SHEET NO. 3 OF 4 FILE NO. 30798 DESIGN NO. 512