

2016 Iowa Traffic Fatalities



2016 Iowa Traffic Fatality Count for 01/05/17

A fatality is considered "crash-related" when death occurs within 30 days of a crash. Because complex crash investigations can delay the official report of fatalities, the numbers for the most current months are preliminary and can change considerably.

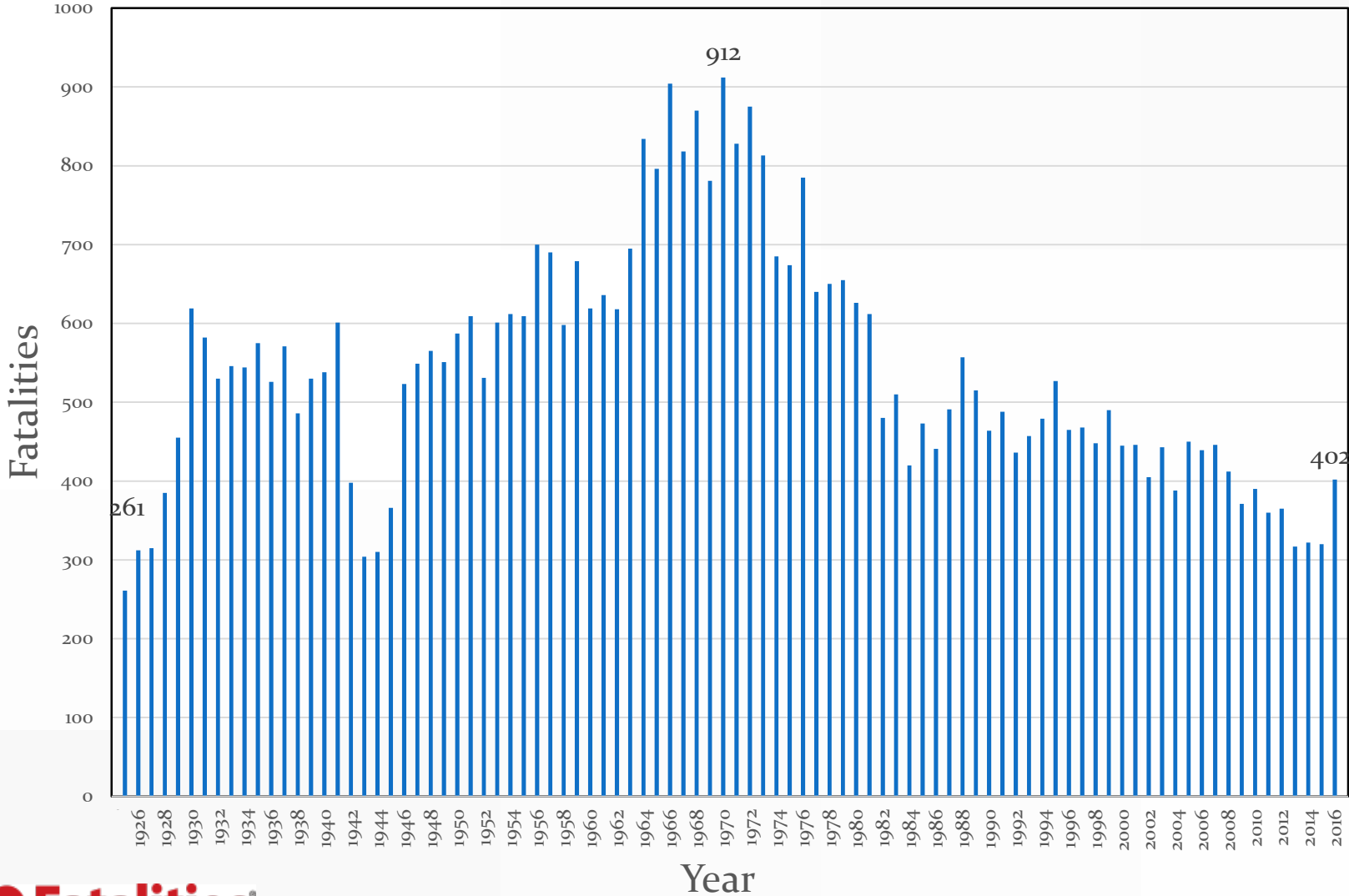
Number of Fatalities Reported on this Day by Year

2016	402	5 Year Comparison (2011-2015)		
			Count	%
2015	316	Increase from Last Year	86	27.22%
2014	321	Increase from Low Year of Last 5 yrs.	86	27.22%
2013	317	Increase from High Year of Last 5 yrs.	43	11.98%
2012	359	Increase from 5 Year Average	68	20.36%
2011	355	Average fatalities year to date for this day (2011-2015)		334

Monthly Fatality Count (2011-2015 figures are end-of-month totals)

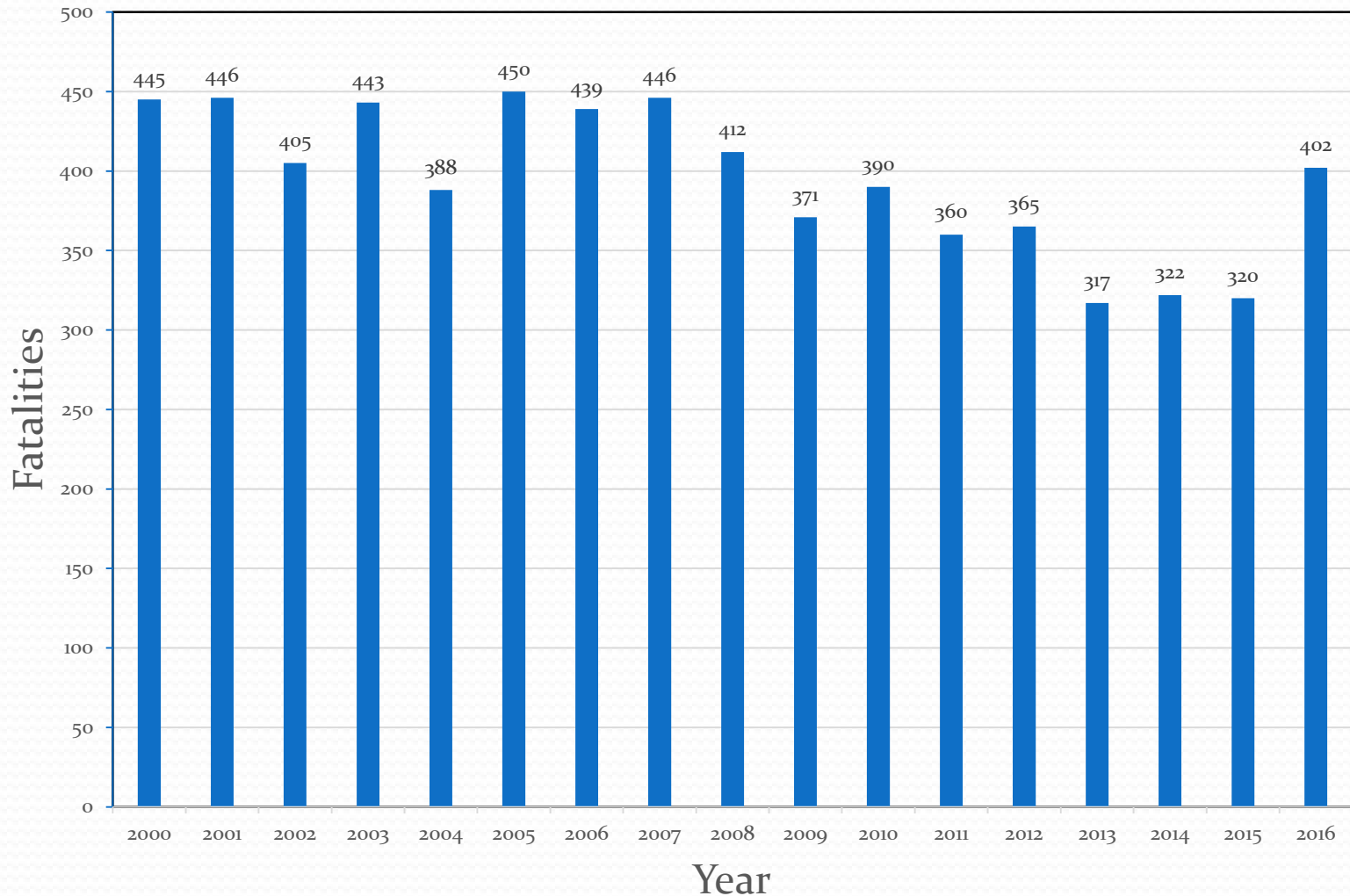
MONTH	2016	2015	2014	2013	2012	2011
January	28	18	28	22	39	19
February	18	18	16	15	23	14
March	25	19	16	21	29	40
April	33	31	22	24	15	25
May	39	25	27	24	48	26
June	38	25	26	29	27	25
July	38	33	29	26	23	36
August	38	51	36	35	39	29
September	31	29	34	37	35	43
October	40	24	30	29	26	37
November	37	23	46	27	35	28
December	37	24	12	28	26	38
TOTAL	402	320	322	317	365	360

Iowa Roadway Fatality History: 1925 - 2016



ZERO Fatalities[®]
A Goal We Can All Live With

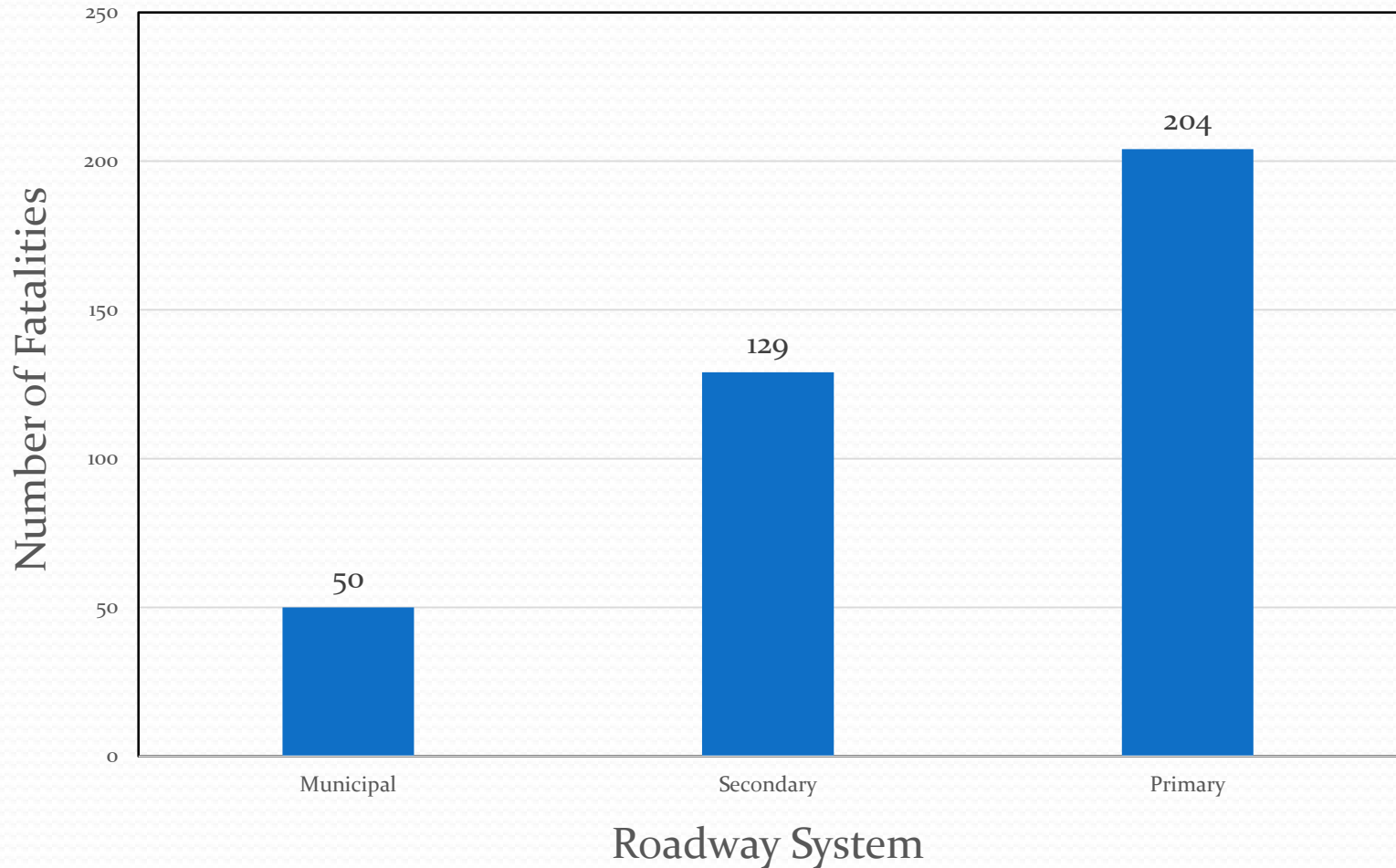
Iowa Roadway Fatality Totals: 2000-2016



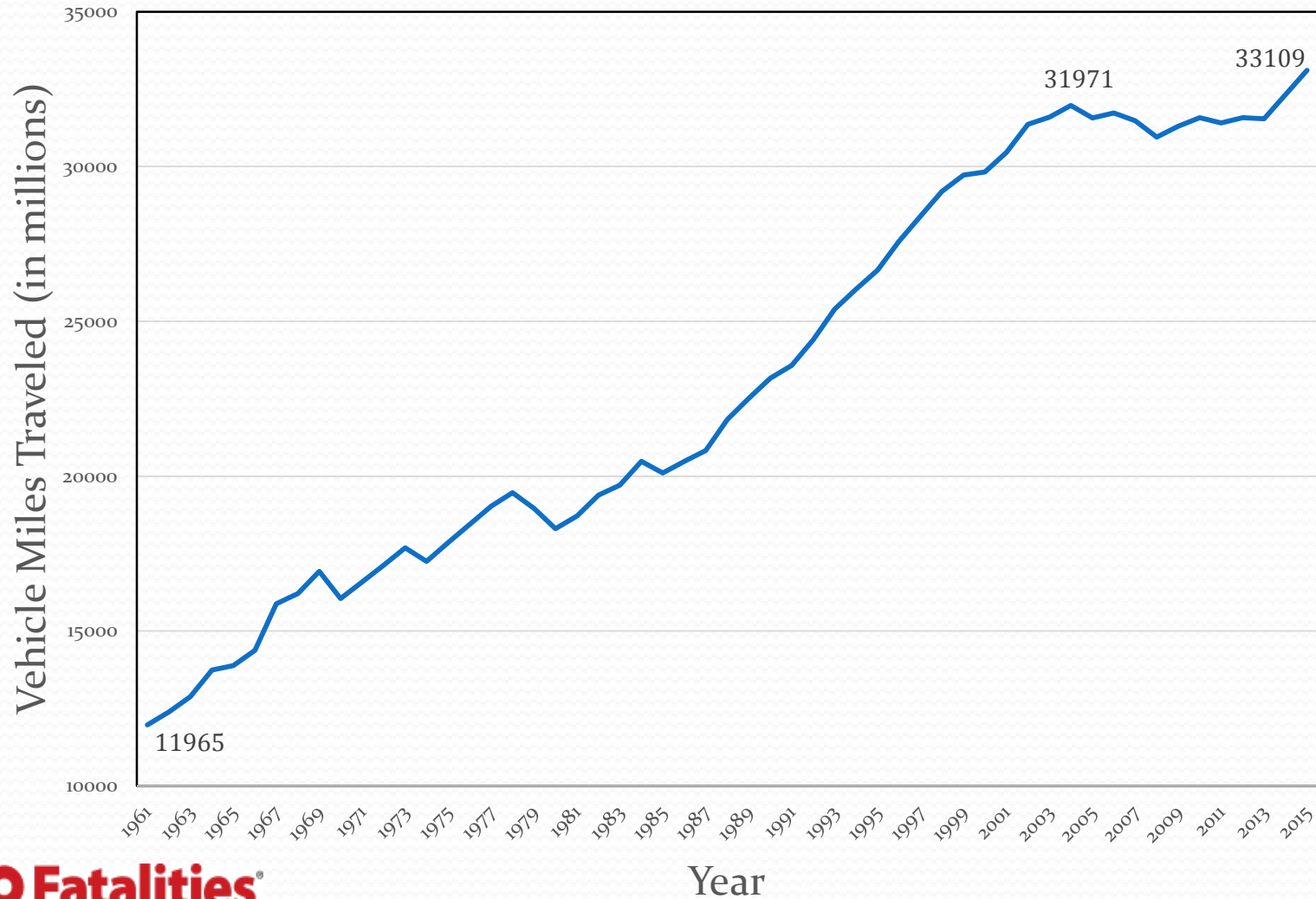
10 Years of Iowa Fatalities



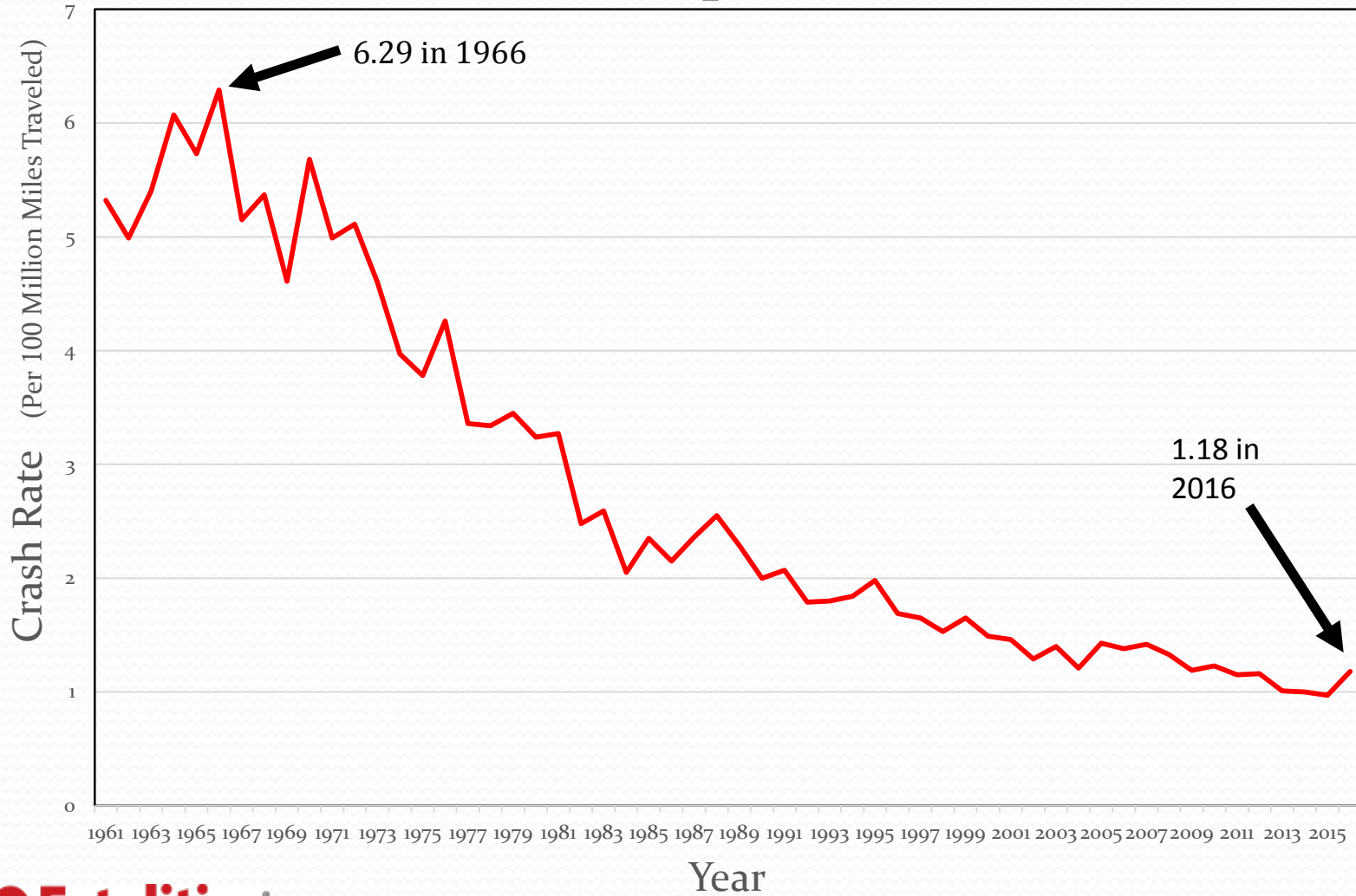
2016 Fatalities by Roadway System



Vehicle Miles Traveled by Year

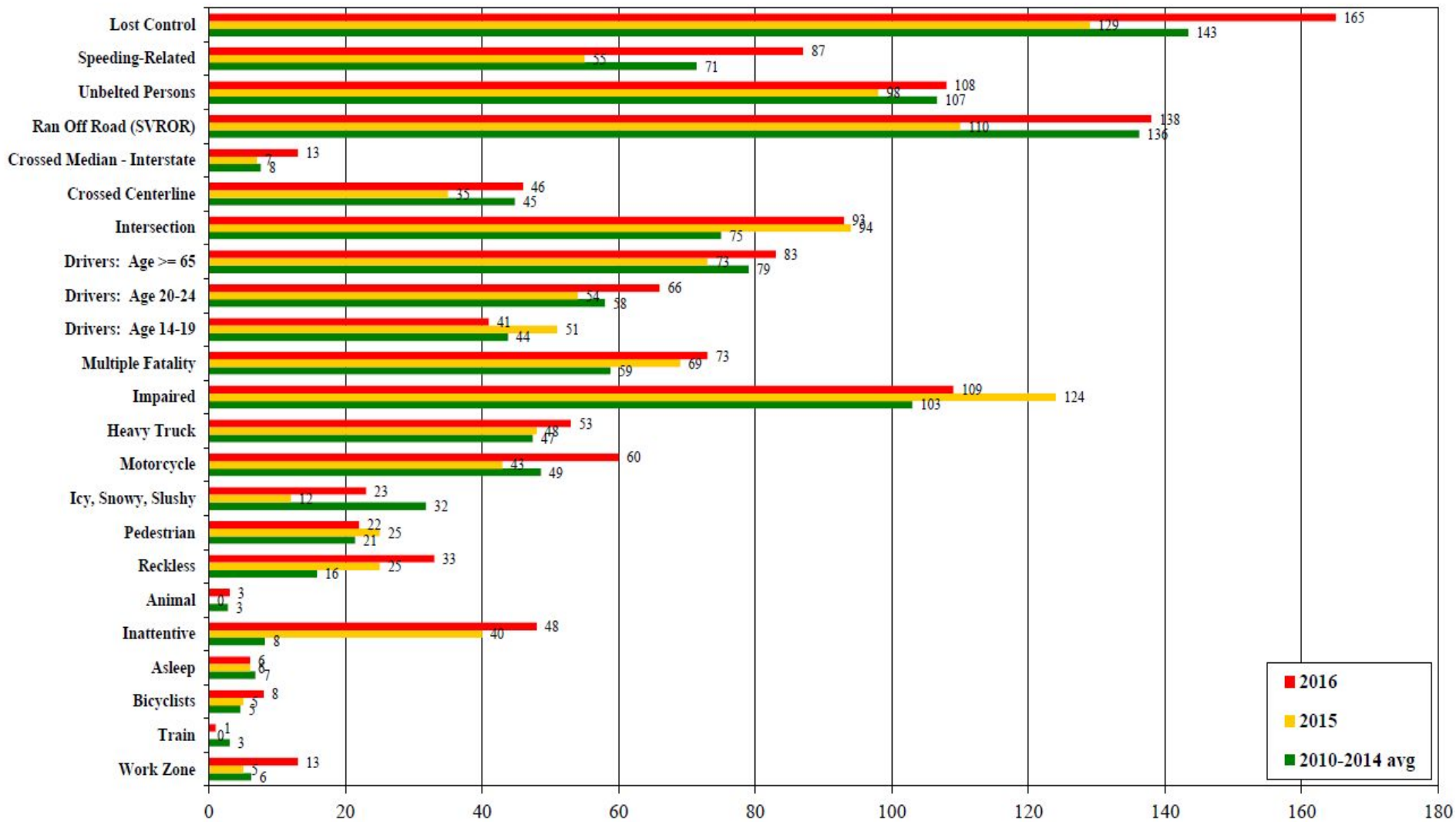


Crash Rate Comparison: 1961 - 2016



Iowa Fatalities Associated with Key Emphases - January thru December 31

(by Iowa Dept. of Transportation - Office of Traffic and Safety on January 6, 2017)



Critical Roadway Safety Issues

- Traffic Volumes Increasing
- Seat Belt Use
 - 93% of Front Seat - Belted
 - 47% of Fatalities – Unbelted
- Impaired Driving
 - 30% of Fatalities Involve an Impaired Driver
- Distracted Driving
 - ??????? - Grossly Underreported



Questions?



Zero Fatalities[®]
A Goal We Can All Live With