



UMSL Midwest Transportation Consortium
February 12, 2016

*“How much has happened in these 50 years
– a period more remarkable than any, I will
continue to say, in the annals of mankind”*

Benjamin Disraeli, 1873



- Terminal 1 built in 1956 with space-age design
- Glamour and excitement surrounded air travel
- Exclusivity and rarity for new form of transport





- Airports were a place of wonderment
- Emphasis on luxury, services and amenities
- The Airport was a projection of industries to come, and advanced technology for St. Louis
- St. Louis was proudly moving forward as a gateway to the world



**Aviation was booming
through the
1960s and 1970s**

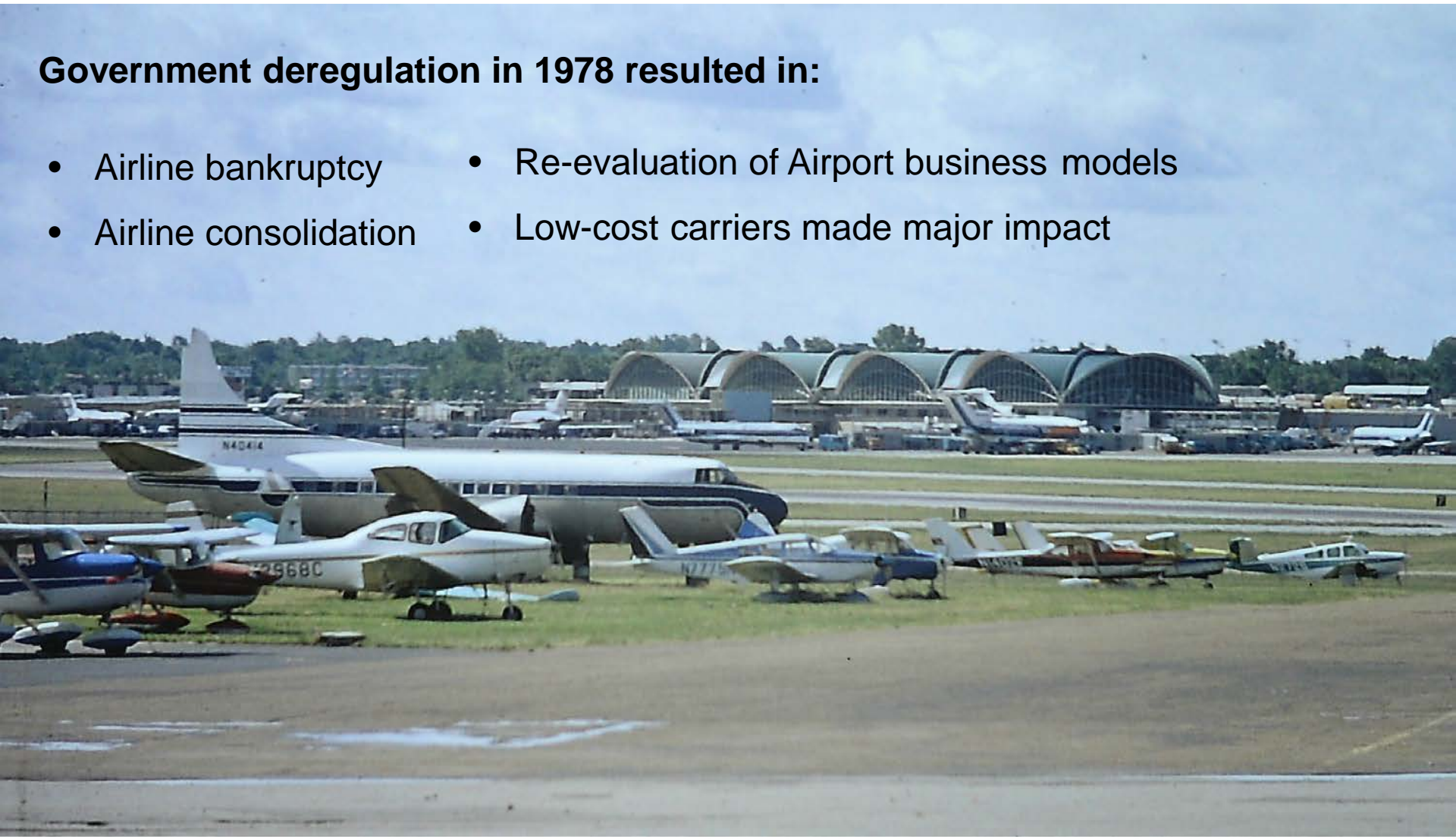


**Prosperity for our region
and others around the country**



Government deregulation in 1978 resulted in:

- Airline bankruptcy
- Re-evaluation of Airport business models
- Airline consolidation
- Low-cost carriers made major impact





Airports became
viewed as public
utilities

The commonplace
and popularity of
air travel made it
a casual experience

No longer was the
glamorous industry
it once was





As the industry started the de-hubbing of medium sized cities, airports found themselves faced with new financial hardships

Lack of cash

Declining revenues

Decreases in federal funding

A storm was brewing for future sustainable airports

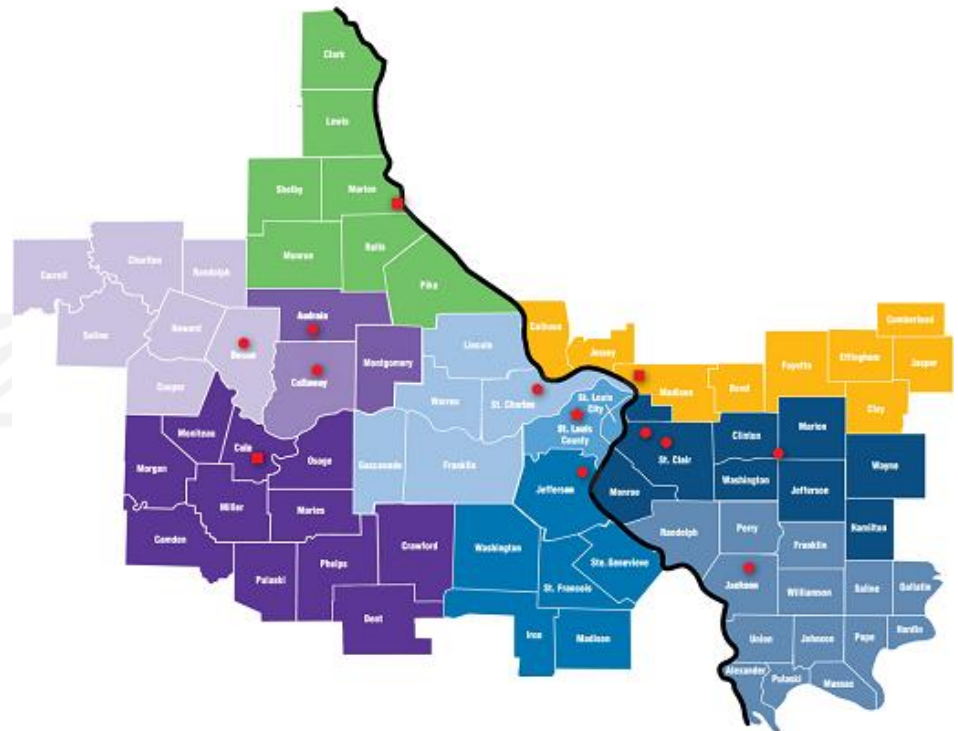
It was the beginning of a metamorphosis

*What do airports of the
future look like?*



Airports are drivers in the regional economy, playing a critical role in sustaining a strong region

- Region and airport go hand-in-hand
- Importance region's economy
- Global growth of your region
- Demographic and economic shifts



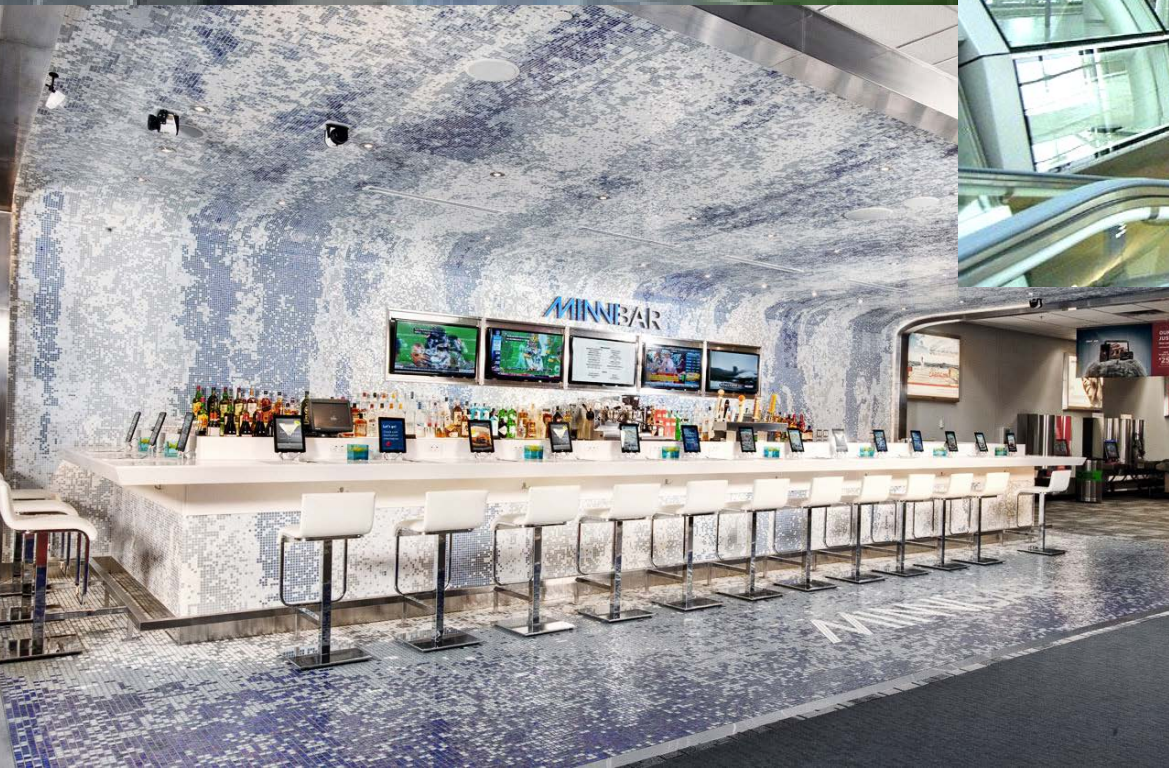


Airports must recreate themselves

- Find non-aeronautical revenues to help build projects of the future and keep costs competitive
- Form strategic partnerships
- Evaluate revenue streams



A LOOK TOWARDS THE FUTURE





Airports will be
places of:

Safety First

Efficiency

Sustainability

Fun

Activity

Creativity

Design

Innovative revenue
streams

Extensions of
regional cultures

A LOOK TOWARDS THE FUTURE



Airports of the future will be an integral part of the region and cultural core

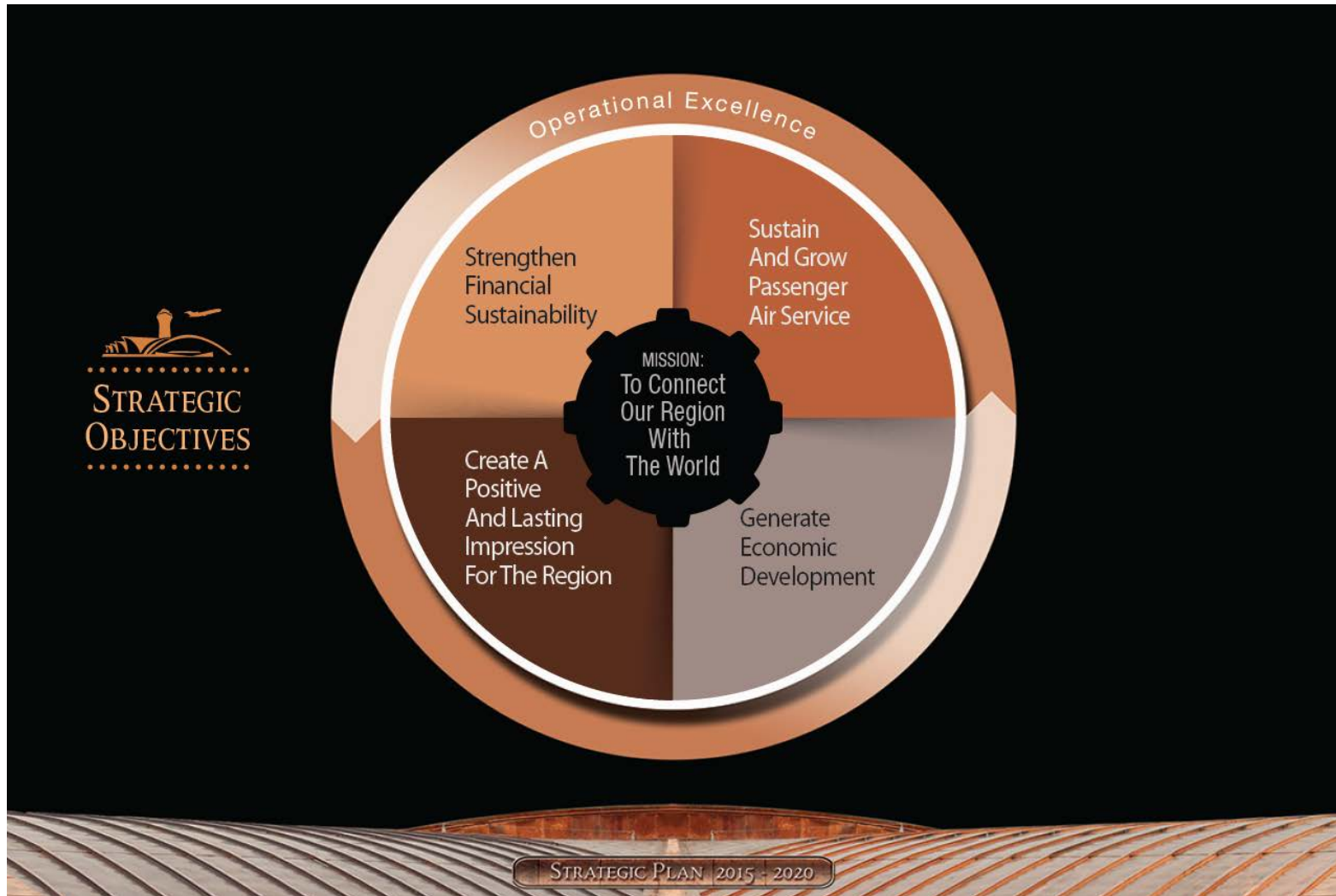
Importance of Strategic Plans



LAMBERT-ST. LOUIS
INTERNATIONAL AIRPORT®

5 YEAR STRATEGIC PLAN 2015 - 2020





Thank you.