

# Stretching the Envelope ~ Preserving the Moscow Covered Bridge



James Barker, P.E.  
*J.A. Barker Engineering, Inc.*  
*Bloomington, Indiana*





Rolling Stone Bridge in Putnam County, IN



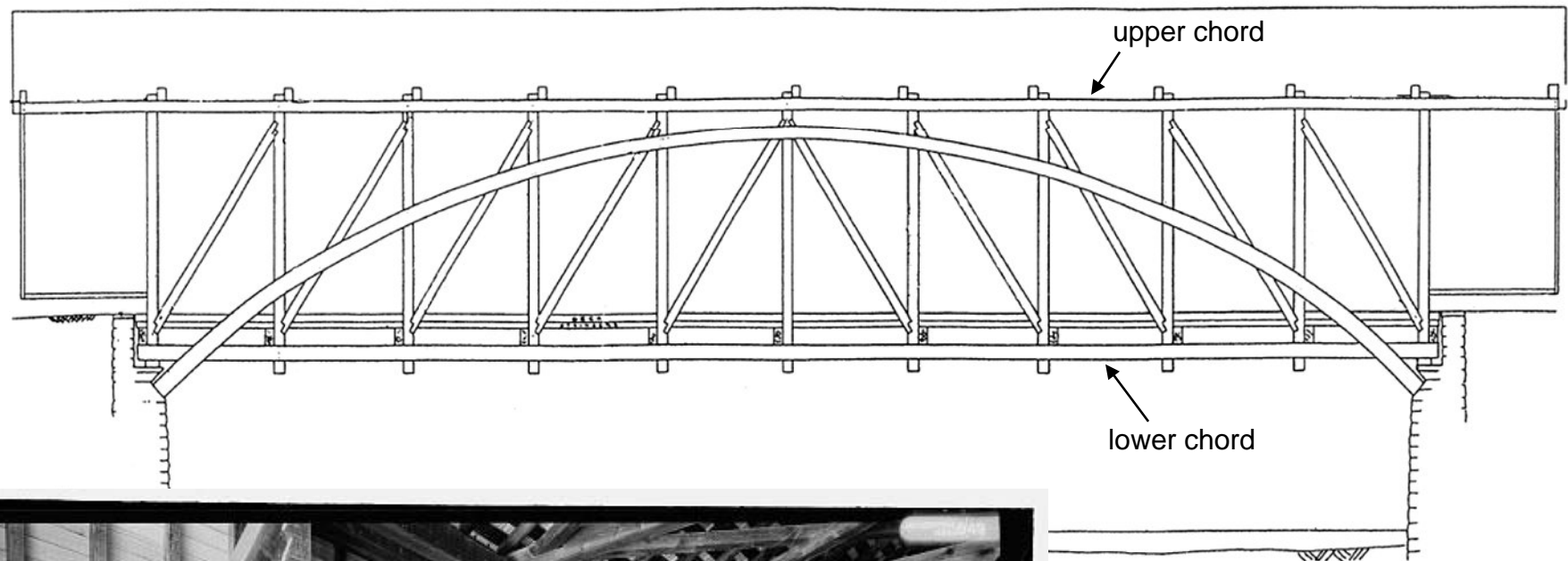


Williams Bridge in Lawrence County, IN









Burr Arch Truss





Just finished,  
1886

A. M. Kennedy  
1818 - 1897

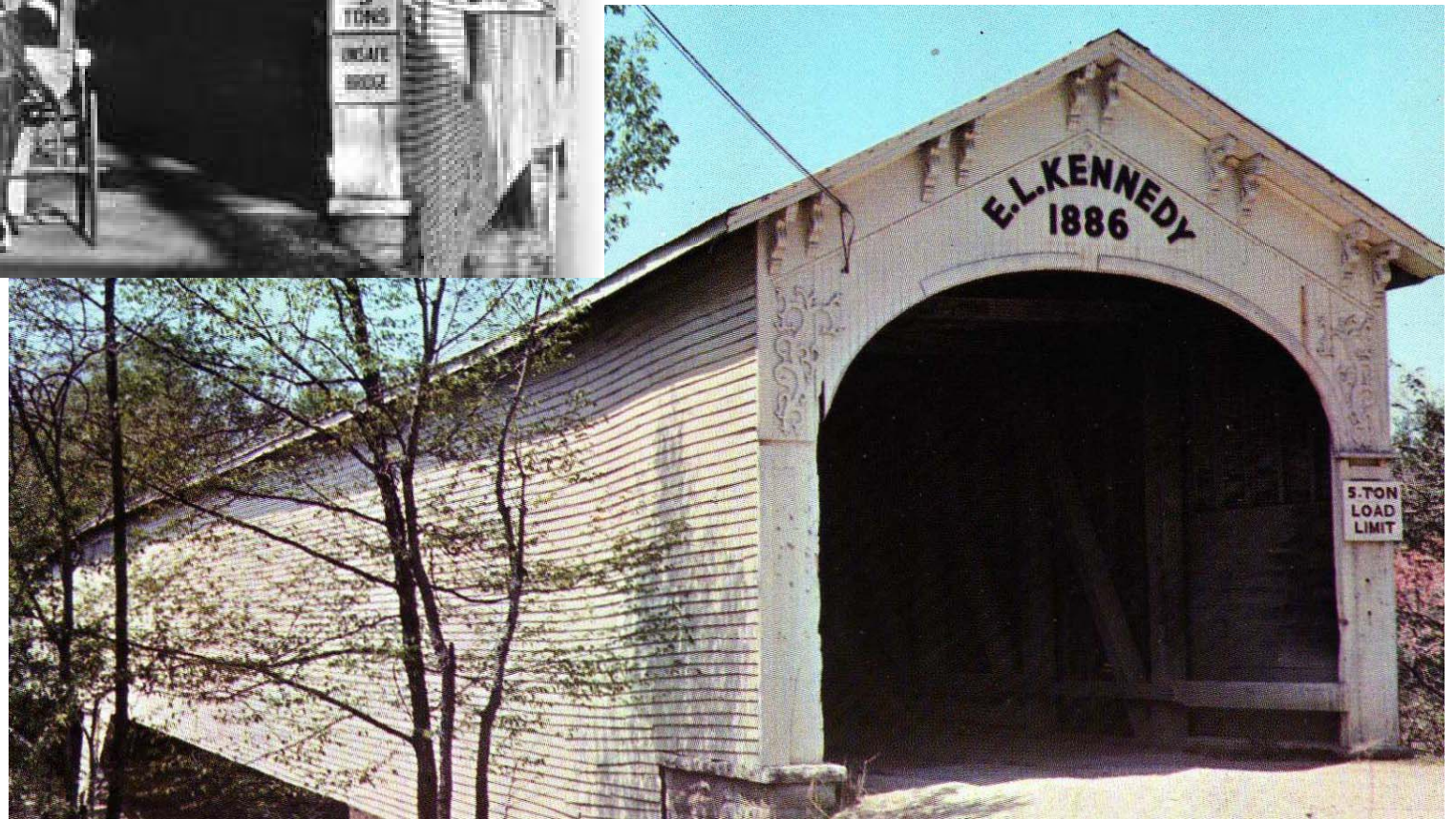






believed 1950's

1960's





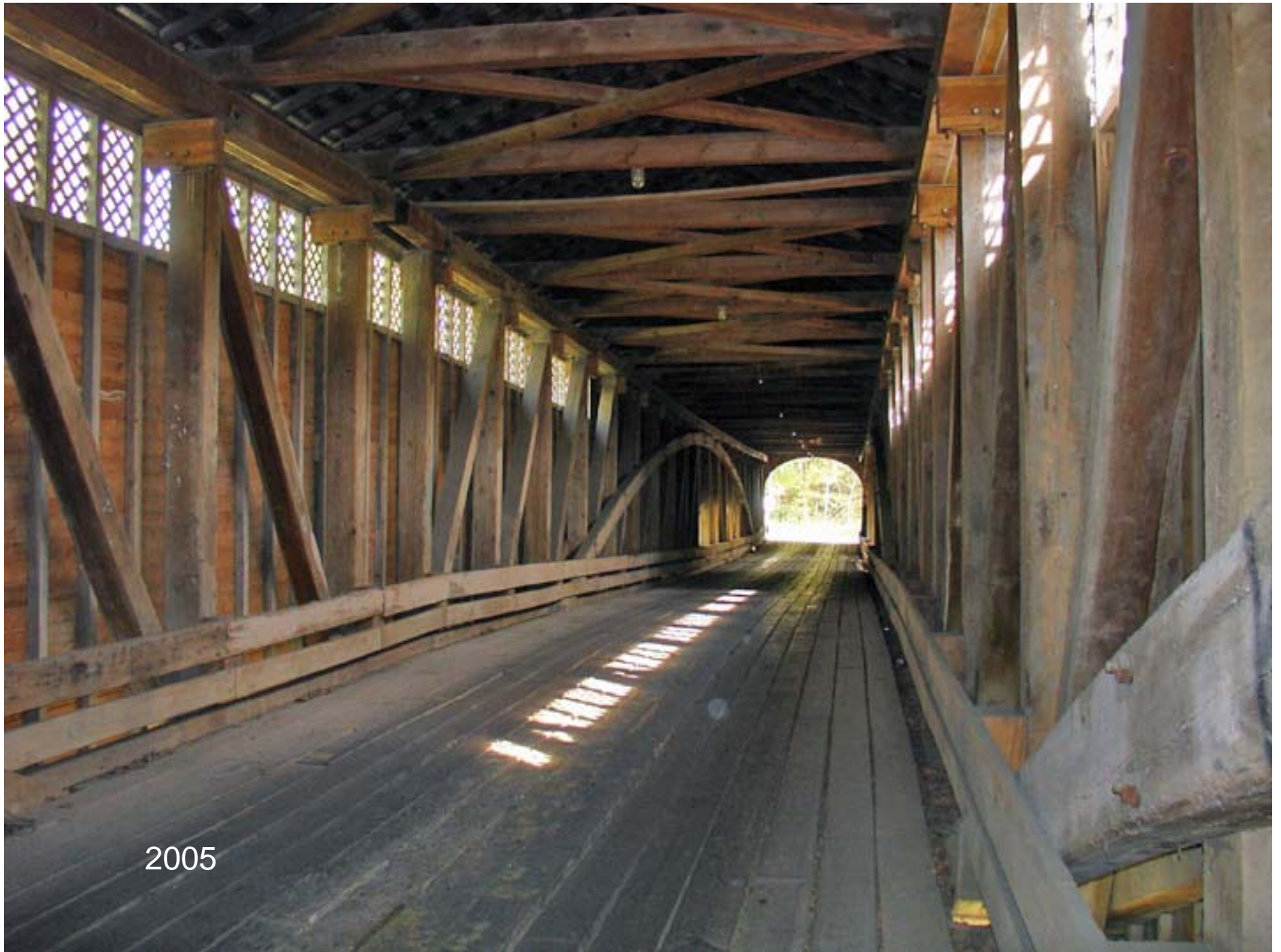
2003





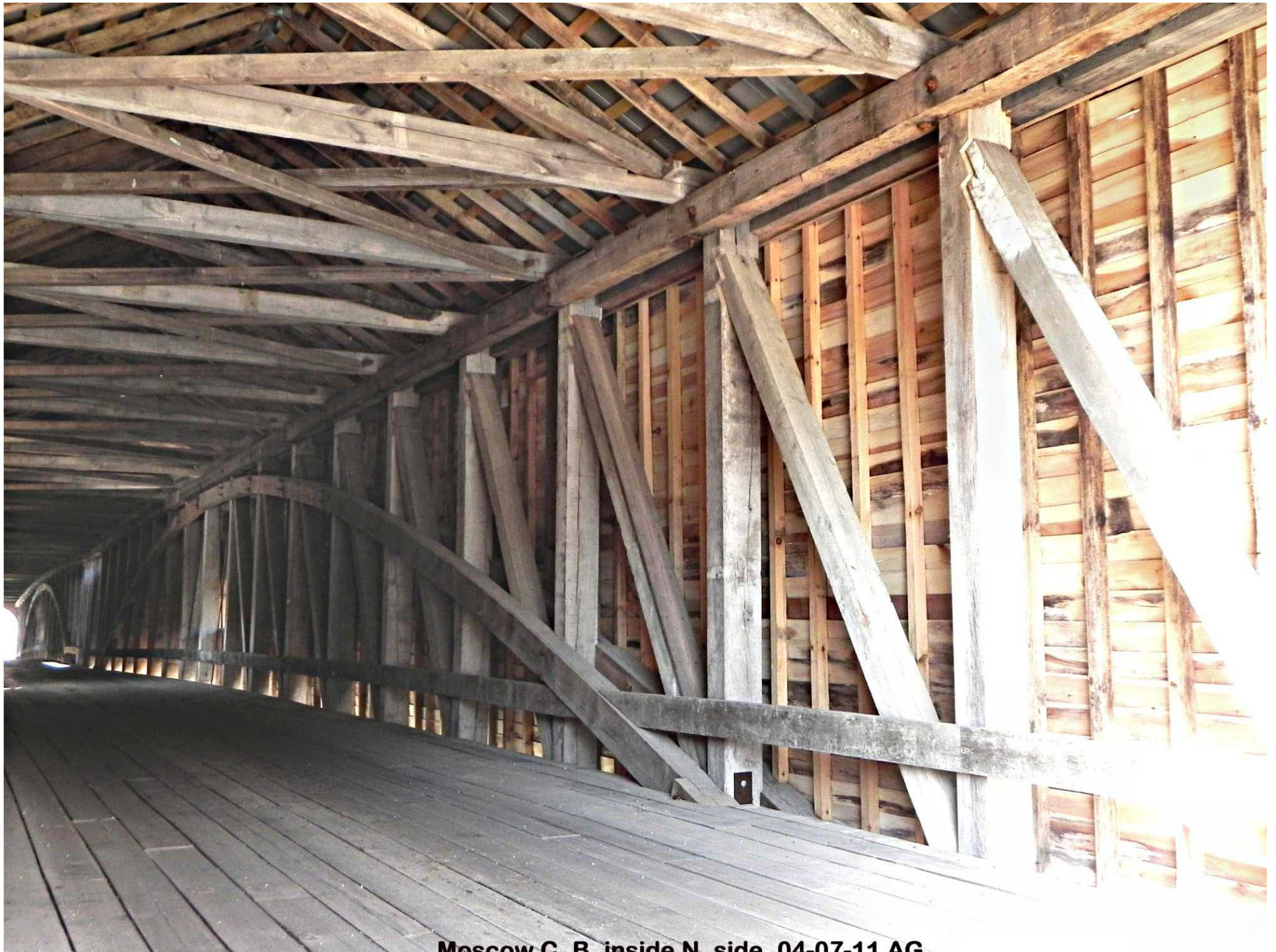






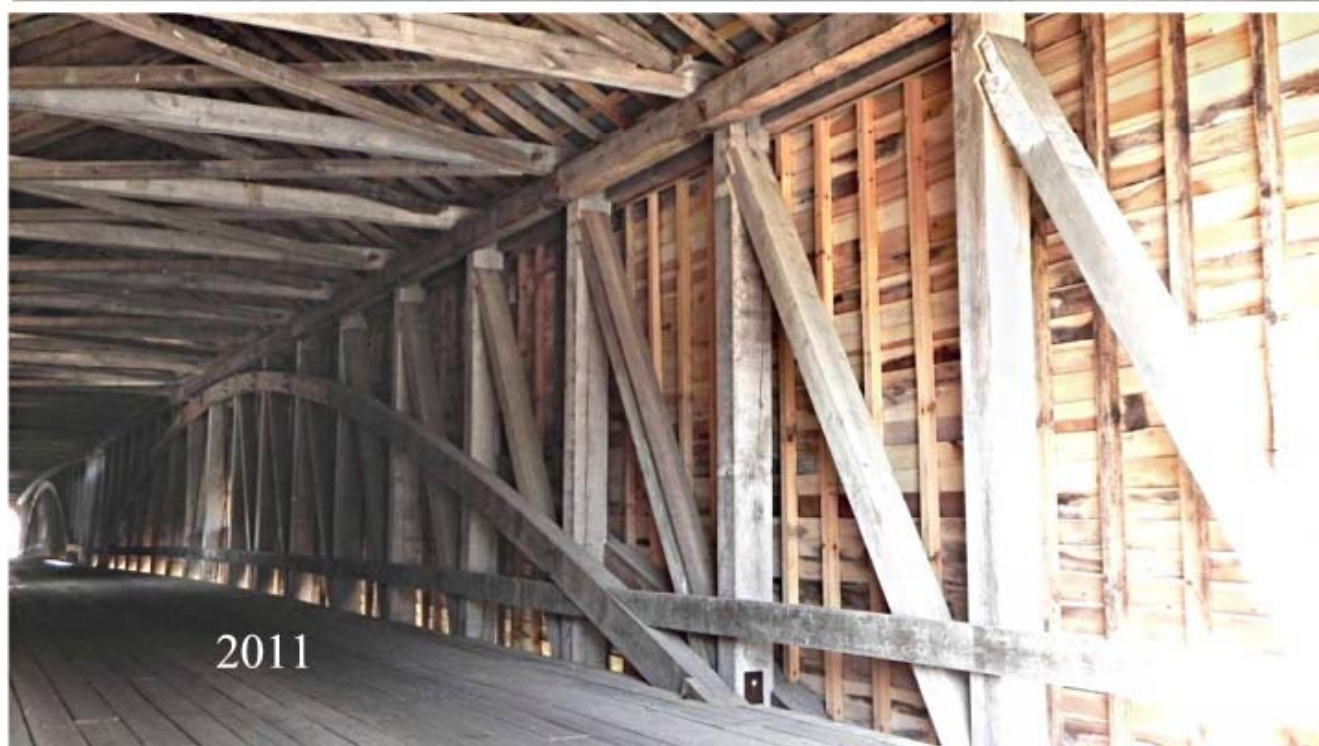
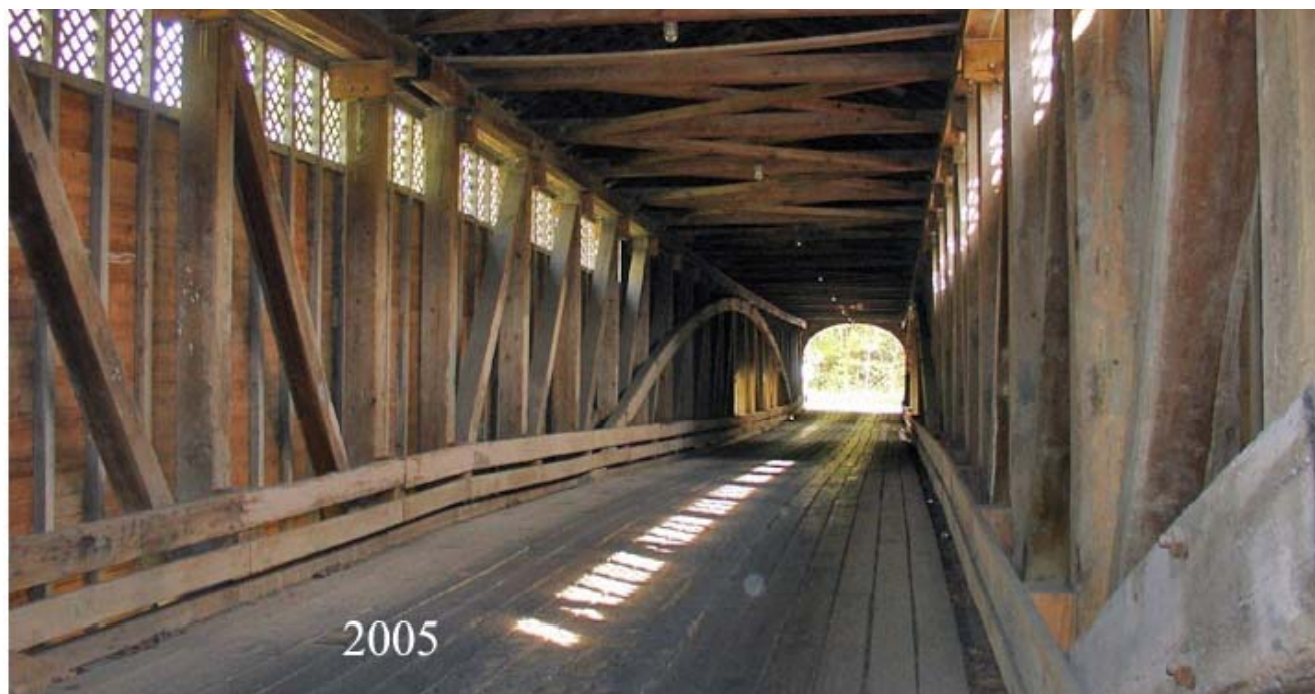
2005





Moscow C. B. inside N. side 04-07-11 AG





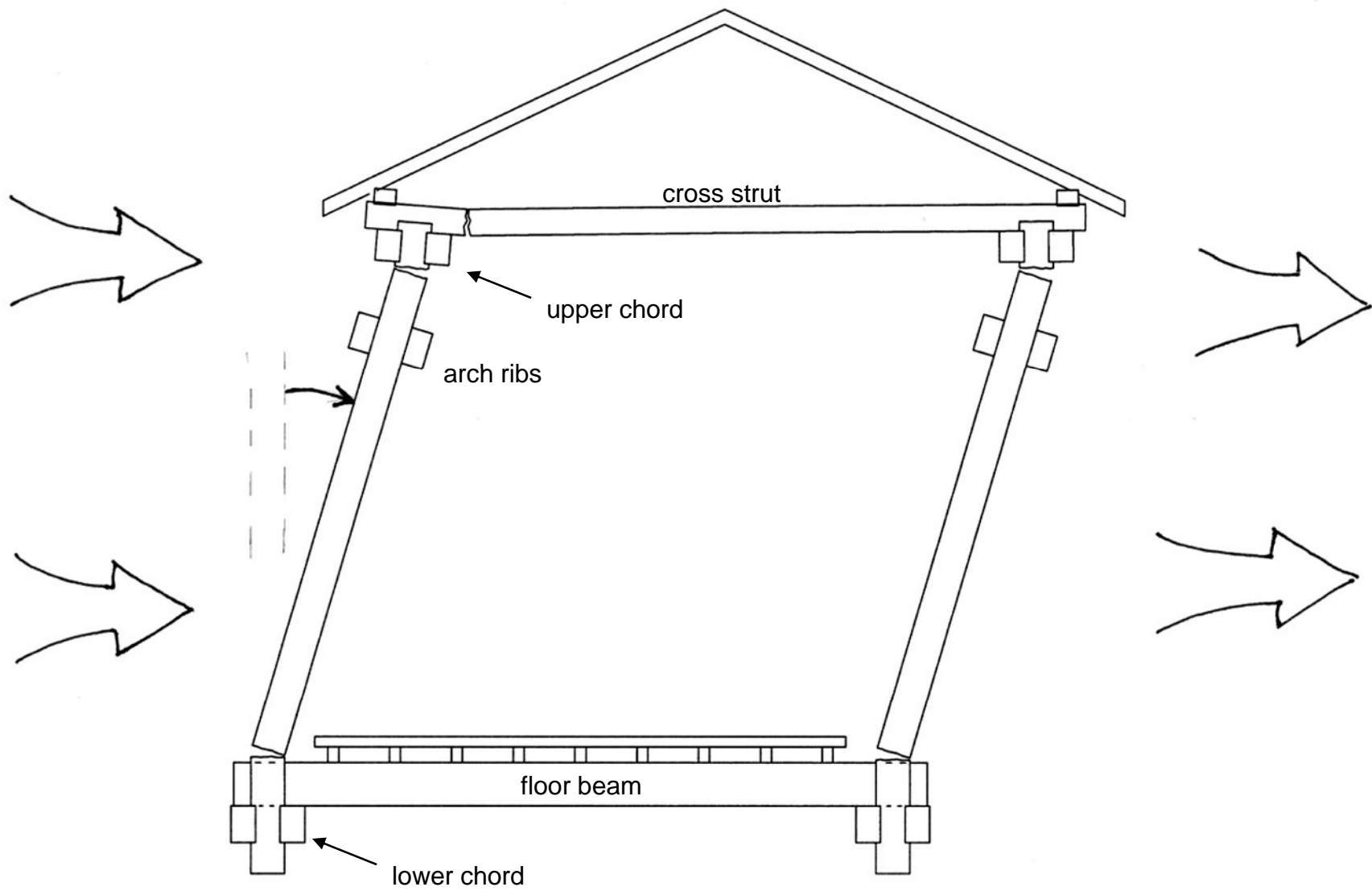










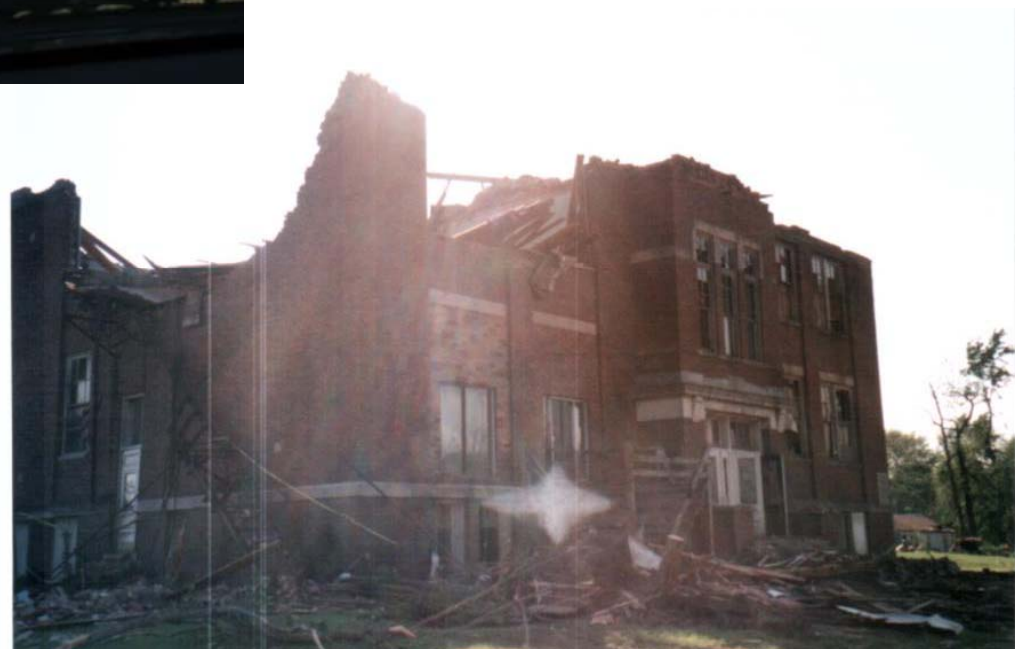






June 3, 2008

Moscow School



















salvage work underway



damage to east abutment













lateral bracing timbers

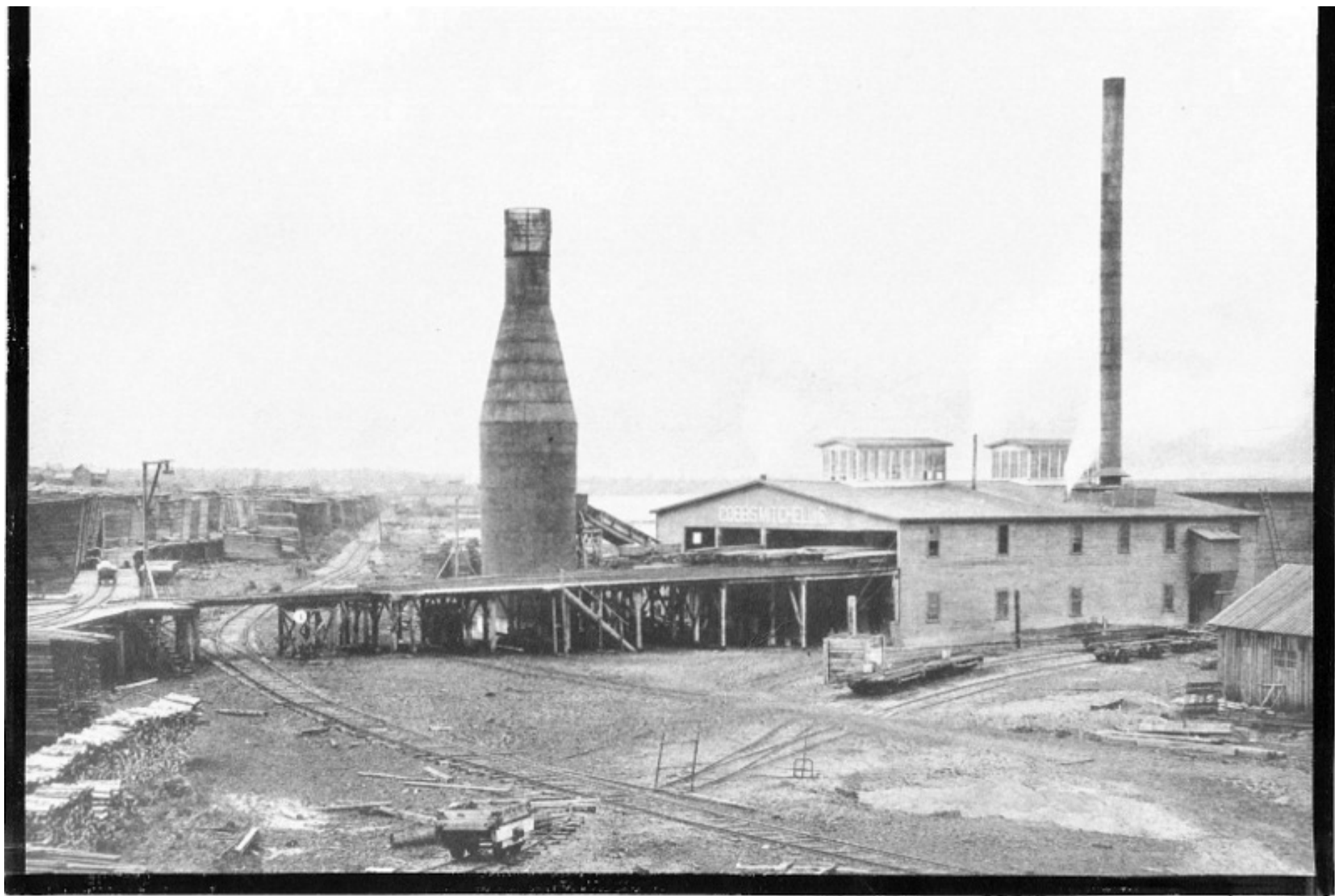












Cobb & Mitchell—Mills.

1890

























Indiana Dept. of Natural Resources, Forestry Division, harvesting logs

























Square and Level Construction crew, Dan Collom (right) chief timber framer













NorthWestCorner  
West Span



















Jing Zhou,  
engineer/designer













































































































































# The End

Will be glad to answer questions

[jim@jabarker.com](mailto:jim@jabarker.com)