

SUDAS Revision Submittal Form

Status Date: As of 5/17/2019 **Topic:** Boxouts in HMA pavements
Manual: Specifications **Manual Location:** Figure 7020.201

Requested Revision: *See the attached figure.*

Reason for Revision: Expanded options for jointing when HMA is extended through the boxout to the casting.

Comments: None.

District: 1 2 3 4 5 6

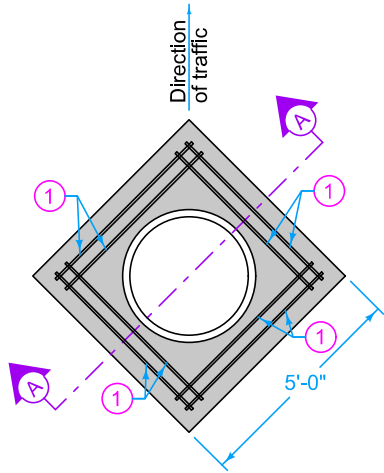
Comments: None.

Action: Deferred Not Approved Approved

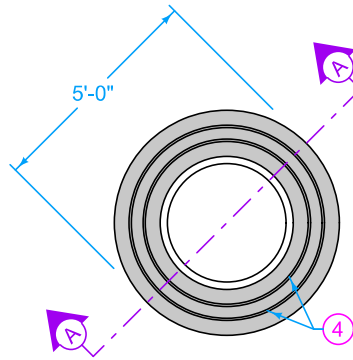
Final District Action Summary: All 6 districts approved.

Board of Directors Action: Approved.

DRAFT



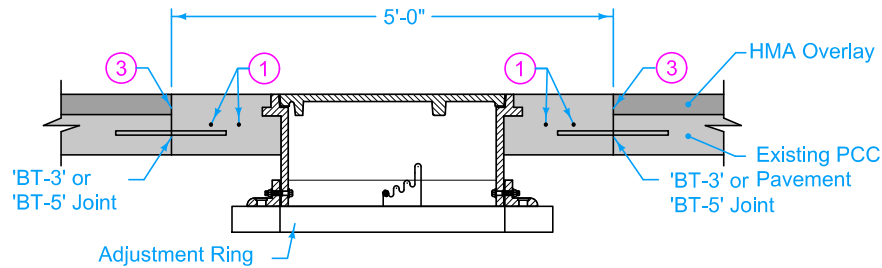
RECTANGULAR



CIRCULAR

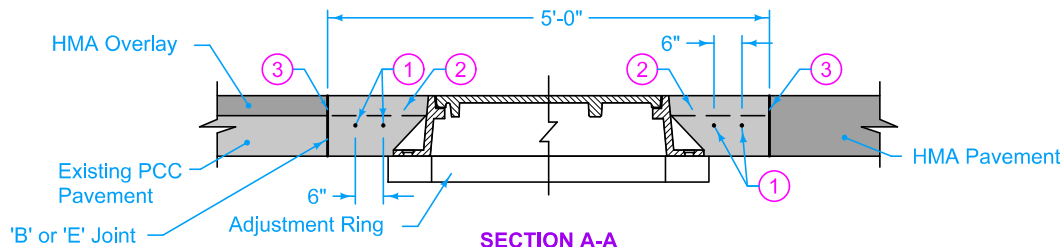
Construct boxout with Class C concrete. Minimum 2 inches clear on reinforcement. Center casting within boxout area.

- ① 4 foot 8 inch (typ.) #4 bar. Place at mid-slab.
- ② If boxout is constructed prior to placement of HMA overlay or final lift of HMA pavement, boxout may be constructed low, with a 'B' joint in place of the 'E' joint, and then final lift or overlay placed.
- ③ Apply tack coat.
- ④ #4 hoops (variable length). Place at mid-slab.



SECTION A-A

(For three-piece floating casting)



SECTION A-A

(For two-piece fixed casting)

		REVISION
		1
FIGURE 7020.201 STANDARD ROAD PLAN		PV-201
DRAFT		SHEET 1 of 1
David D. Wiegand <small>SENIOR ENGINEER</small>		[Signature] <small>SENIOR ENGINEER</small>
MANHOLE BOXOUTS IN HMA PAVEMENT AND HMA OVERLAYS		