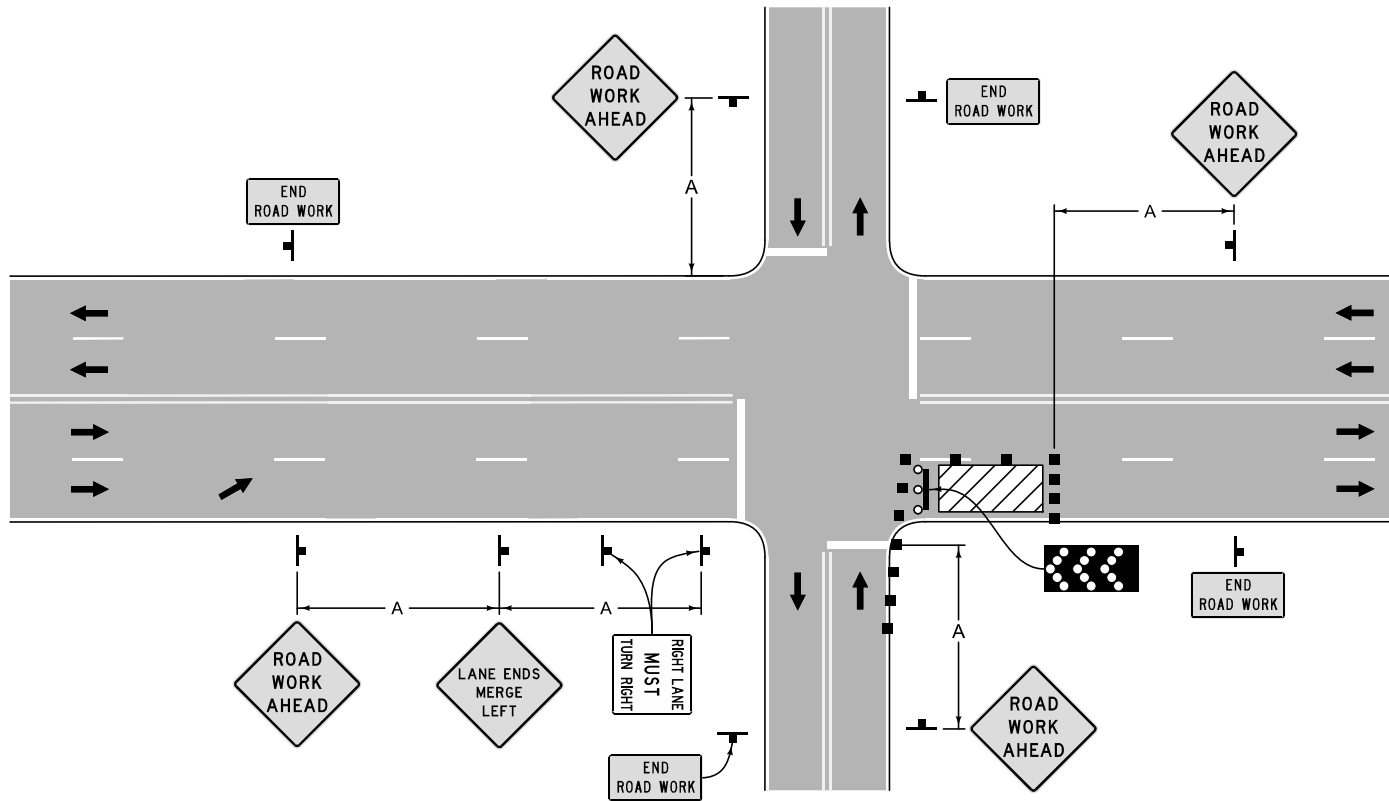



If the work area extends across the crosswalk, the crosswalk should be closed using appropriate information and devices.

For traffic signal maintenance, consider using law enforcement and/or a shadow vehicle.

Right lane closure shown; for left lane closure, modify sign messages and arrow board.

Refer to Figure 8030.101 for symbol key and sign spacing.



	REVISION New 10-17-17
	8030.112
	SHEET 1 of 1
SUDAS Standard Specifications	
LANE CLOSURE ON THE FAR SIDE OF AN INTERSECTION	