

SUDAS Revision Submittal Form

Status Date: As of 11/7/2022 **Topic:** Dowel bar diameter
Manual: Specifications **Manual Location:** Figure 7040.106

Requested Revision: See attached.

Reason for Revision: Since most city streets are not more than 10 inches thick, added a smaller dowel for pavements between 8 and 9.5 inches. Add dowel bar diameter table to figure to address.

Comments: Revised in cooperation with Iowa DOT.

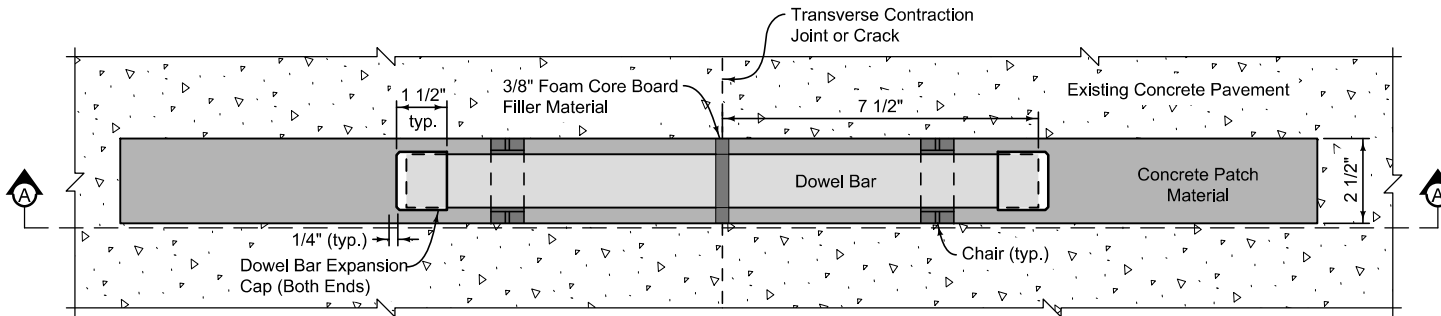
District: 1 2 3 4 5 6

Comments: None.

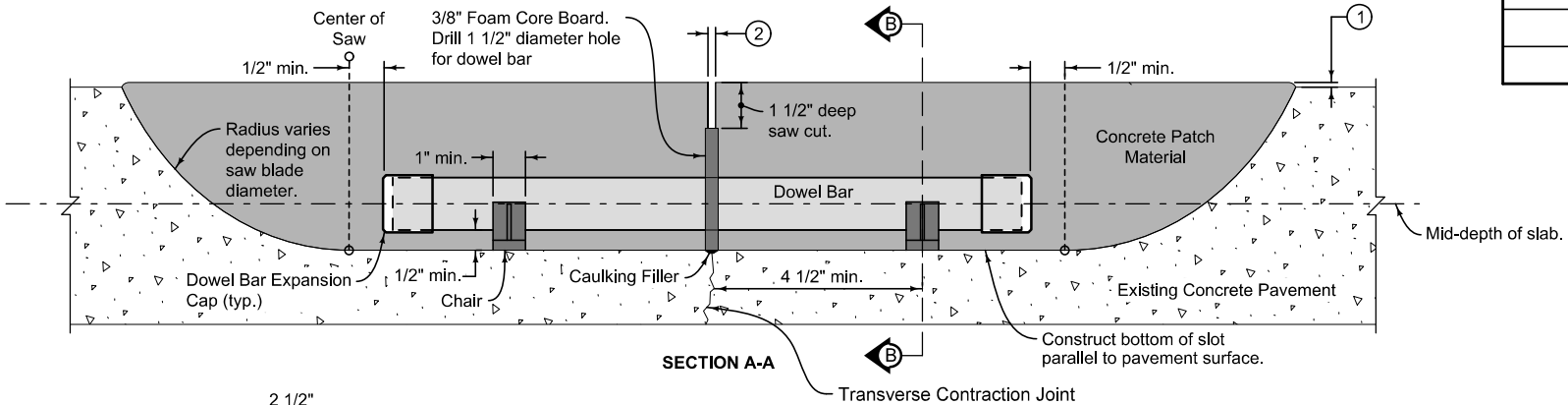
Action: Deferred Not Approved Approved

Final District Action Summary: All 6 districts approved.

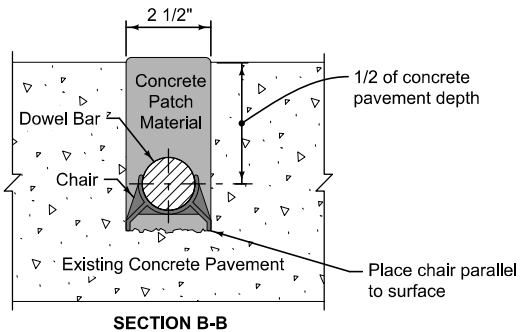
Board of Directors Action: Approved.



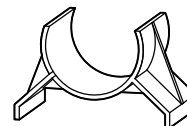
PLAN VIEW



SECTION A-A



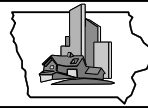
SECTION B-B



CHAIR DETAIL

- ① Extend concrete patch material 1/8" above existing concrete surface for projects to be diamond ground; construct flush if diamond grinding is not required.
- ② Sawcut joint width 3/16" min to 5/16" max. Saw after concrete patch material has set.

DOWEL BAR DIAMETER	
Pavement Thickness (inches)	Diameter (inches)
8 to 9½	1¼
>10	1½

	REVISION 2 2023 Edition
	7040.106 SHEET 1 of 1
SUDAS Standard Specifications	
DOWEL BAR RETROFIT	