

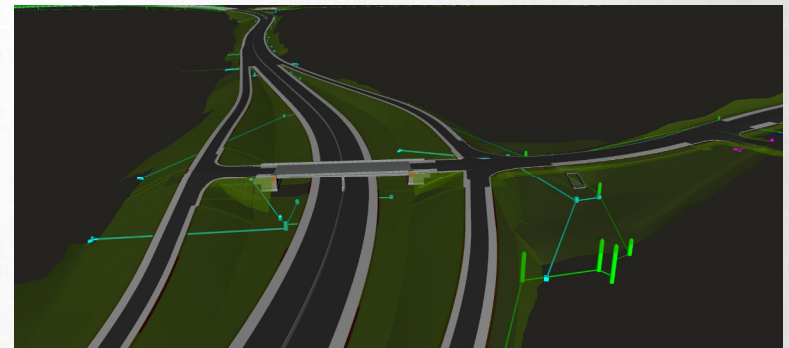
# Model Based Design & Construction (MBDC): Use of Digital Data in Construction

Presented by: Michelle A. Page, UDOT's State Construction Engineer

# Use of Digital Data in Construction

## Overview

- UDOT & MBDC Goals
- Optimizing Digital Data
- What are we doing differently?
- What have we learned?
- Would we do it again?



“Become the first DOT in the country to  
go completely paperless”

Carlos's Top Ten

# Paperless → e-Construction

## FHWA Initiative



## UDOT's e-Construction Steps:

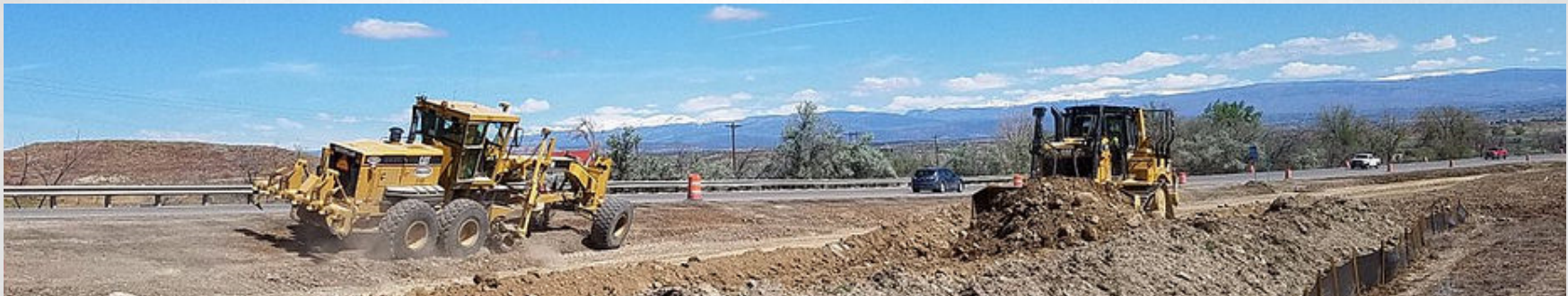
1. Fully Electronic
2. Define Digital Processes & Workflows
3. Review Analytics & Define Tactical Measures
4. Become “Smarter” with your data, dashboards, reports, algorithms, etc.
5. Revisit Content & What Really Matters





# MBDC Goals

- Optimal Design
- Information Transfer to Construction
- Better Data to Improve Decision Making
- Improve Efficiency
- Simplify Design & Construction



# Optimizing Digital Data



# Preconstruction

## What are we doing differently?

- Validating existing information
- Digital Reviews at PS&E
- Mandatory Handoff Meeting
  - Designer to Contractor
  - Preconstruction Surveyor to Contractor's Surveyor



Closed Circuit or Level Loop

| AUTO LEVEL READINGS |      |        |      |        |         |        |
|---------------------|------|--------|------|--------|---------|--------|
|                     | (+)  |        | (-)  |        | STADIA  | DIST   |
| PT                  | BS   | HI     | FS   | ELEV   | TOP/BOT | /Angle |
| RM                  | 7.13 | 107.13 | X    | 100.00 |         |        |
| TP-1                |      |        | 4.26 | 102.87 |         |        |
|                     |      |        |      |        |         |        |
|                     |      |        |      |        |         |        |
|                     |      |        |      |        |         |        |
|                     |      |        |      |        |         |        |
|                     |      |        |      |        |         |        |
|                     |      |        |      |        |         |        |





# Advertising & Bidding

## What are we doing differently?

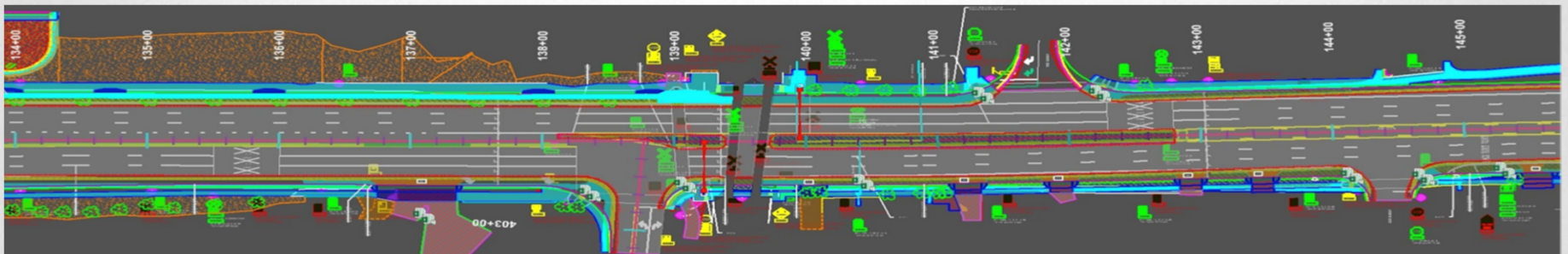
- Supplying more information than ever before
- Pre-Releasing information for Contractors
  - [Google Sites](#) for RFI's from Bidders
  - Testing the release of PS&E (minus the E) package for industry review



# Construction

## What are we doing differently?

- Hardware – iPads & Laptops for all field personnel
- Contractor provided rovers, including training and maintenance
- Software - Communicating RFI's, design revisions, potential change orders, inspection checklists, non-conformance reporting, etc.
  - MS Sharepoint based – Aurigo Masterworks Software
  - Lessons Learned (Document Management Software)

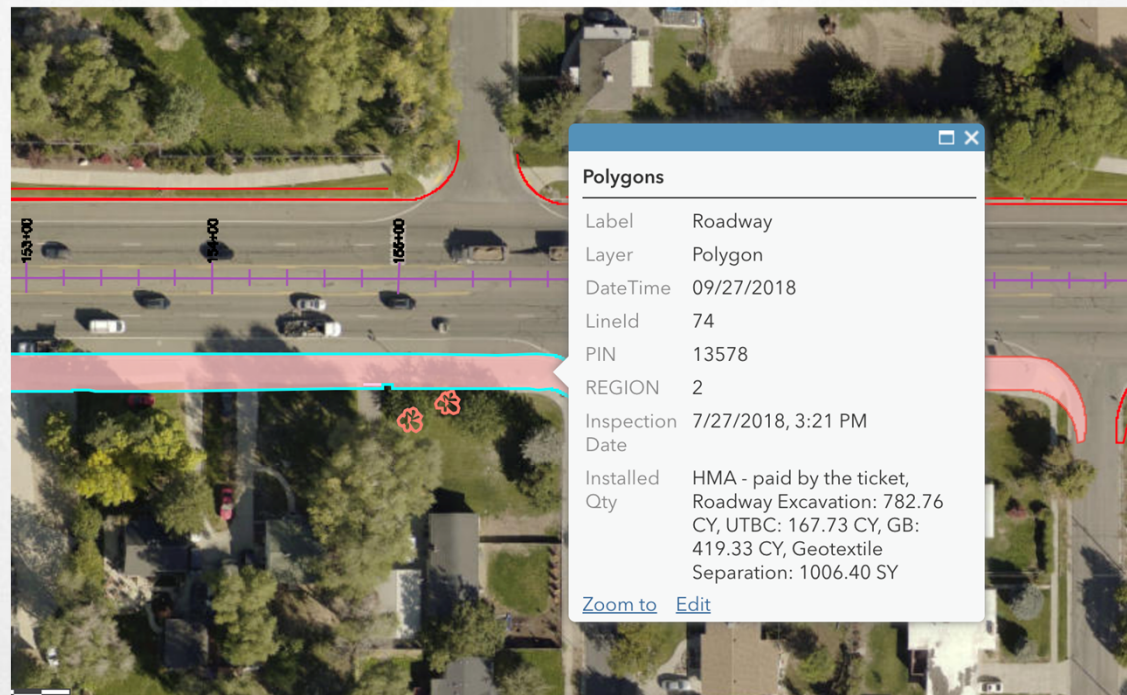




# Construction

## What are we doing differently?

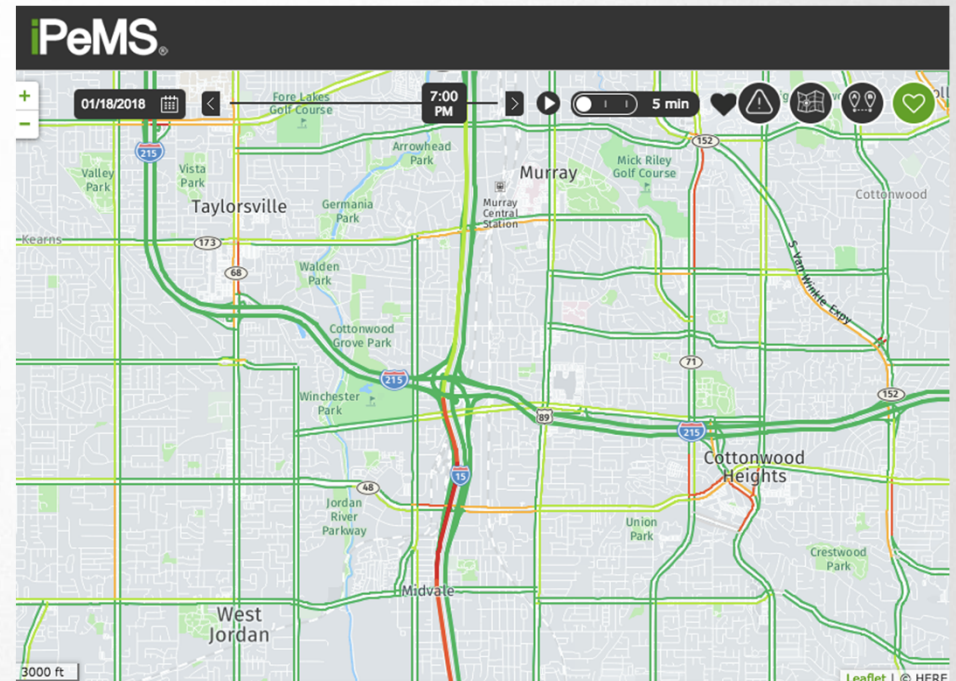
- GIS Collector App for Field Personnel
  - Converting CADD file to GIS format and integrating construction software information



# Next Steps in Technology

## Real Time Traffic Data

- Travel Times for the Traveling Public
- Increased Work Windows for the Contractor

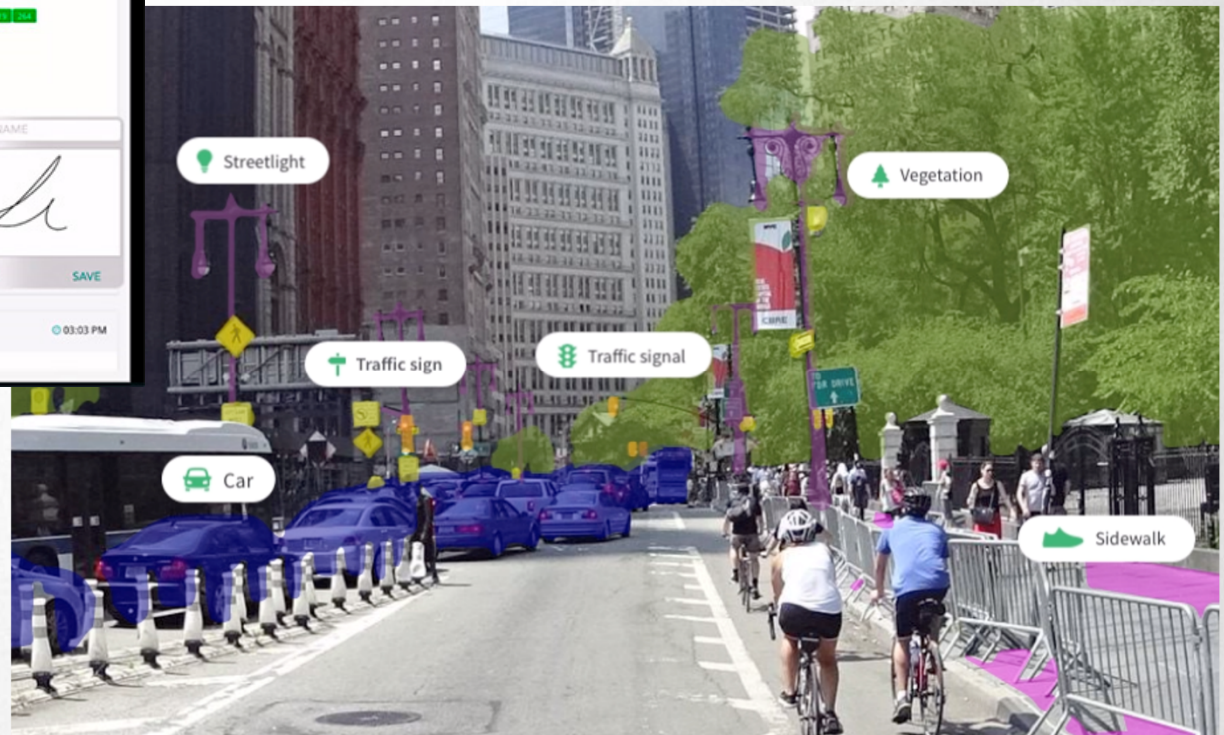
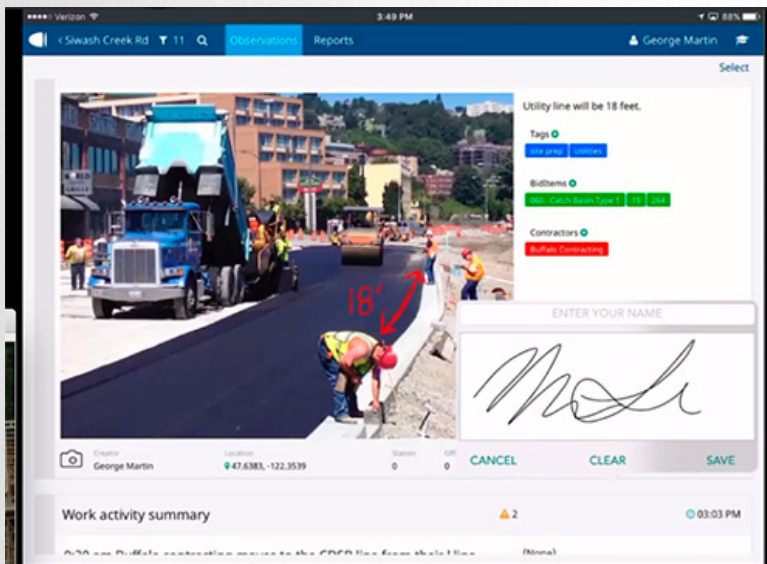




# Next Steps in Technology

## Photo Mapping & Technology

- Pavia – Headlight Pilot Project
- ArcGIS & Mapillary Testing





Any Questions?

# Thank You!!

- Michelle A. Page, UDOT State Construction Engineer, [michellepage@Utah.gov](mailto:michellepage@Utah.gov)

